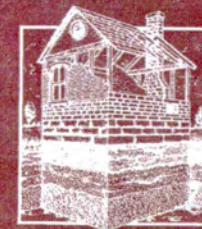


MD 172
Vol. 2/3

Final
Maryland National Road Historic Context



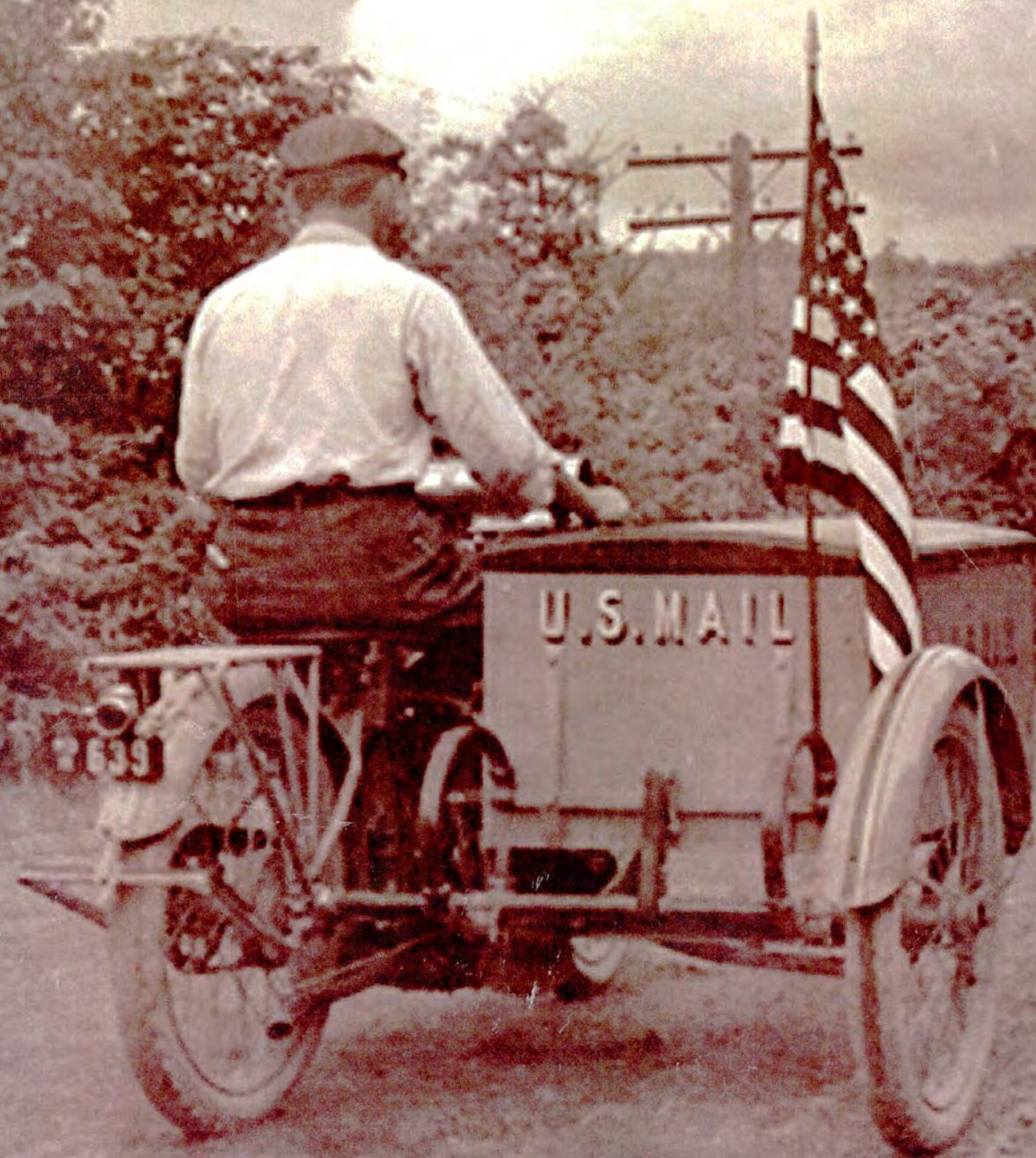
GRAY & PAPE
INC.
CULTURAL RESOURCES CONSULTANTS

SEPTEMBER 7, 2005

Volume II
Appendix B

PREPARED FOR:
Maryland Historical Trust
Division of Historical and
Cultural Programs
Department of Housing and
Community Development
100 Community Place, Room 3.115
Crownsville, Maryland 21032-2023

PREPARED BY:
Gray & Pape, Inc.
1318 Main Street
Cincinnati, Ohio 45202



Resource Name	CPP#	NRHP Number	County	MIHP Number & Archaeological Site #	Historical Association W/ Road	Street Number	Address	Town	Quad Name	Map Sheet	Label
B&O Transportation Museum	293	66000906	Baltimore City		NO				BALTIMORE WEST	C01	293
Hollins Market	302		Baltimore City		NO				BALTIMORE WEST	C01	302
Full Gospel True Mission Church	292		Baltimore City		NO				BALTIMORE WEST	C01	292
New Mt. Sinai Church	291		Baltimore City		NO				BALTIMORE WEST	C01	291
Bromo Seltzer Bldg	298	73002184	Baltimore City		NO				BALTIMORE EAST	C01	298
H.L. Mencken House	303	83004384	Baltimore City		NO				BALTIMORE WEST	C01	303
Levy-Friedenwald-Rosenfeld Bldg	299		Baltimore City		NO				BALTIMORE EAST	C01	299
Turner-White Casket Company	300	94001553	Baltimore City		NO				BALTIMORE EAST	C01	300
Davidge Hall	301	97001275	Baltimore City		NO				BALTIMORE EAST	C01	301
Gandy Belting Company Bldg	294	84000085	Baltimore City		NO				BALTIMORE WEST	C01	294
Erlanger Bldgs	295	80001785	Baltimore City		NO				BALTIMORE EAST	C01	295
Sonneborn Bldg	296	82001588	Baltimore City		NO				BALTIMORE EAST	C01	296
Wilkens-Robins Bldg	297	80001792	Baltimore City		NO				BALTIMORE EAST	C01	297
Commerical Bldg	298A		Baltimore City		NO				BALTIMORE EAST	C01	298A
Commercial Bldg	298B		Baltimore City		NO				BALTIMORE EAST	C01	298B
UMB Adminstration Bldg	301A		Baltimore City		NO				BALTIMORE WEST	C01	301A
St. Paul's Cemetery	301B		Baltimore City		NO				BALTIMORE WEST	C01	301B
Miracle Temple SBA Church	303A		Baltimore City		NO				BALTIMORE WEST	C01	303A
Old Alignment	303B		Baltimore City		YES				BALTIMORE WEST	C01	303B
Summit	273	79001114	Baltimore	BA-1107	NO				BALTIMORE WEST	C02	273 / BA-1107
Summit (Elsinore, Gary House)			Baltimore	BA-1107	NO	10	Stanley Drive	Catonsville	BALTIMORE WEST	C02	BA-1107
Old Catonsville High School	276A	87001568	Baltimore	BA-2306	NO				BALTIMORE WEST	C02	276A / BA-2306
Old Catonsville High School (St. Mark's School)			Baltimore	BA-2306	NO	20	Winters Lane	Catonsville	BALTIMORE WEST	C02	BA-2306
Old National Pike Milestone No. 6			Baltimore	BA-2459	YES		Frederick Road (MD 144)	Catonsville	BALTIMORE WEST	C02	BA-2459
Old National Pike Milestone No. 7			Baltimore	BA-2460	YES		Frederick Road (MD 144)	Catonsville	BALTIMORE WEST	C02	BA-2460
Winston House			Baltimore	BA-2544	NO	6348	Frederick Road (MD 144)	Catonsville	BALTIMORE WEST	C02	BA-2544
Belle Grove			Baltimore	BA-2744	NO	12	Hillview Drive	Catonsville	BALTIMORE WEST	C02	BA-2744
Eisenhardt House (McKinnell House)			Baltimore	BA-2769	NO	42	Ridge Road	Catonsville	BALTIMORE WEST	C02	BA-2769
Salem Evangelical Lutheran Church	276		Baltimore	BA-4	NO				BALTIMORE WEST	C02	276 / BA-4
Old Salem (Evangelical Lutheran) Church & Cemetery			Baltimore	BA-4	NO	701	Ingleside Avenue	Catonsville	BALTIMORE WEST	C02	BA-4
Albert Smith House			Baltimore	BA-6	NO	701	Frederick Road (MD 144)	Catonsville	BALTIMORE WEST	C02	BA-6
St. Timothy's Church	279		Baltimore	BA-927	NO				BALTIMORE WEST	C02	279 / BA-927
St. Timothy's Church, Rectory			Baltimore	BA-927	NO	200	Ingleside Avenue	Catonsville	BALTIMORE WEST	C02	BA-927
Christadelphian Chapel	278		Baltimore		NO				BALTIMORE WEST	C02	278
Catonsville UMC	274		Baltimore		NO				BALTIMORE WEST	C02	274
US Post Office, Catonsville	275		Baltimore		NO				BALTIMORE WEST	C02	275
Catonsville National Bank	277		Baltimore		NO				BALTIMORE WEST	C02	277
Terminal Hotel	271		Baltimore		YES				BALTIMORE WEST	C02	271
No. 8 Trolley R.O.W.	272		Baltimore		NO				BALTIMORE WEST	C02	272
Mount Olivet Cemetery	289		Baltimore City		NO				BALTIMORE WEST	C02	289
Mount St. Joseph's	285		Baltimore City		NO				BALTIMORE WEST	C02	285
Queen Anne-Style Mansion	290		Baltimore City		NO				BALTIMORE WEST	C02	290
Victorian House	284		Baltimore City		NO				BALTIMORE WEST	C02	284
Loudon Park Cemetery	287	96000655	Baltimore City		NO				BALTIMORE WEST	C02	287
Paradise Shopping District	282		Baltimore City		YES				BALTIMORE WEST	C02	282
Irvington Market	286		Baltimore City		NO				BALTIMORE WEST	C02	286
Baltimore Nat' Cemetery	280		Baltimore City		NO				BALTIMORE WEST	C02	280
Fire Company Building	288		Baltimore City		NO				BALTIMORE WEST	C02	288
Tudor Row	281		Baltimore City		NO				BALTIMORE WEST	C02	281
Schwartz Mansion	283	85002174	Baltimore City		NO				BALTIMORE WEST	C02	283
Former Gas Station	282A		Baltimore City		YES				BALTIMORE WEST	C02	282A
Benjamin Banneker Homestead, site			Baltimore	BA-1141	NO		Old Frederick Road & Oella Avenue	Ellicott City	ELLCOTT CITY	C03	BA-1141
Oella Historic District (Oella Mills)			Baltimore	BA-150	NO			Ellicott City	ELLCOTT CITY	C03	BA-150
Gray's Mill Ruins & Outbuilding (A)(Patapsco Facto			Baltimore	BA-1576	NO		River Road	Ellicott City	ELLCOTT CITY	C03	BA-1576
Gray's Mill Stone House			Baltimore	BA-1577	NO	2732	River Road	Ellicott City	ELLCOTT CITY	C03	BA-1577
Granite Factory Dwelling			Baltimore	BA-2083	NO	1213-1215	Oella Avenue	Ellicott City	ELLCOTT CITY	C03	BA-2083
Granite Factory Dwelling			Baltimore	BA-2084	NO	1211-1209	Oella Avenue	Ellicott City	ELLCOTT CITY	C03	BA-2084
Granite Factory Dwelling			Baltimore	BA-2085	NO	1206-1204	Oella Avenue	Ellicott City	ELLCOTT CITY	C03	BA-2085
Granite Factory Dwelling			Baltimore	BA-2086	NO	1202-1200	Oella Avenue	Ellicott City	ELLCOTT CITY	C03	BA-2086
McLaughlin House-Tavern			Baltimore	BA-2144	NO	1245 (6?)	Oella Avenue	Oella	ELLCOTT CITY	C03	BA-2144
Haus-Phillips House (Manro's Tavern)	270		Baltimore	BA-2171	YES	1810	Frederick Road (MD 144)	Catonsville	ELLCOTT CITY	C03	270 / BA-2171
Manro's Tavern (Hause-Phillips House)	270		Baltimore	BA-2171	YES	1810	Frederick Road (MD 144)	Catonsville	ELLCOTT CITY	C03	BA-2171
Washington Flour Mill	264		Baltimore	BA-2209	NO				ELLCOTT CITY	C03	264 / BA-2209
Ellicott Mills Historic District			Baltimore	BA-2209	YES			Ellicott City	ELLCOTT CITY	C03	BA-2209
Oella Mill	263		Baltimore	BA-2375	NO				ELLCOTT CITY	C03	263 / BA-2375

Old National Pike Milestone No. 9			Baltimore	BA-2461	YES		Frederick Road (MD 144)	Catonsville	ELLCOTT CITY	C03	BA-2461	
Route 40 Concrete Bridge over Patapsco Falls			Baltimore	BA-2557	YES		National Pike (US 40)	Ellicott City	ELLCOTT CITY	C03	BA-2557	
Herbert-Gathman House			Baltimore	BA-2563	NO	1901	Frederick Road (MD 144)	Catonsville	ELLCOTT CITY	C03	BA-2563	
Trolley Bridge Piers and Abutments			Baltimore	BA-2569	NO	6	Oella Avenue	Ellicott City	ELLCOTT CITY	C03	BA-2569	
#9 Trolley Bridge Ruins	261		Baltimore	BA-2571	NO				ELLCOTT CITY	C03	261 / BA-2571	
No. 9 Trolley Car Right-of-Way			Baltimore	BA-2571	NO		Edmonson Avenue	Ellicott City	ELLCOTT CITY	C03	BA-2571	
No. 9 Trolley Car Right-of-Way			Baltimore	BA-2571	NO		Edmonson Avenue	Ellicott City	ELLCOTT CITY	C03	BA-2571	
Jonathan Ellicott House, site			Baltimore	BA-601	NO		Frederick Road (MD 144)	Ellicott City	ELLCOTT CITY	C03	BA-601	
George Ellicott House			Baltimore	BA-602	NO	24	Frederick Road (MD 144)	Ellicott City	ELLCOTT CITY	C03	BA-602	
The Alhambra			Baltimore	BA-638	NO	2901	Westchester Avenue	Ellicott City	ELLCOTT CITY	C03	BA-638	
Mudd Tavern			Baltimore	BA-872	NO	514-516	Rolling Road	Catonsville	ELLCOTT CITY	C03	BA-872	
Gray's School House			Baltimore	BA-879	NO	169	Frederick Road (MD 144)	Ellicott City	ELLCOTT CITY	C03	BA-879	
B&O RR Station and Museum	262	68000025	Baltimore	HO-078	NO				ELLCOTT CITY	C03	262 / HO-078	
Candle Light Inn	268		Baltimore		YES				ELLCOTT CITY	C03	268	
Frame and Stone House	267		Baltimore		NO				ELLCOTT CITY	C03	267	
Early Stone House	266		Baltimore		NO				ELLCOTT CITY	C03	266	
Village of Gray's Level	265		Baltimore		NO				ELLCOTT CITY	C03	265	
Oak Grove	269		Baltimore		NO				ELLCOTT CITY	C03	269	
Old Alignment	265A		Baltimore		YES				ELLCOTT CITY	C03	265A	
Rolling Road	268A		Baltimore		YES				ELLCOTT CITY	C03	268A	
Patapsco Female Inst. (Grounds)	260		Howard	BA-1576, HO-078	NO				ELLCOTT CITY	C03	260 / BA-1576, HO-078	
Brick House on the Pike (Brick House Farm, Ellersl			Howard	HO-025	NO	9564	National Pike (US 40)	Ellicott City	ELLCOTT CITY	C03	HO-025	
St. John's Church - Episcopal	256		Howard	HO-026	NO				ELLCOTT CITY	C03	256 / HO-026	
St. John's Episcopal Church			Howard	HO-026	NO	9130	Frederick Road (MD 144)	Ellicott City	ELLCOTT CITY	C03	HO-026	
Woodlawn (Le Papillon)			Howard	HO-048	NO	8880	Frederick Road	Ellicott City	ELLCOTT CITY	C03	HO-048	
Ellicott Mill Original Historic Site			Howard	HO-073	NO		Frederick Road (MD 144)	Ellicott City	ELLCOTT CITY	C03	HO-073	
George Ellicott House			Howard	HO-074	NO		Frederick Road (MD 144)	Ellicott City	ELLCOTT CITY	C03	HO-074	
Jonathan Ellicott House			Howard	HO-075	NO		Frederick Road (MD 144)	Ellicott City	ELLCOTT CITY	C03	HO-075	
John Ellicott House (The Alhambra)			Howard	HO-077	NO	2901	Westchester Avenue	Ellicott City	ELLCOTT CITY	C03	HO-077	
Thos Isaac Log Cabin	259		Howard	HO-078	NO				ELLCOTT CITY	C03	259 / HO-078	
Ellicott City Historic District			Howard	HO-078	YES				Ellicott City	ELLCOTT CITY	C03	HO-078
Old St. Johns Rectory			Howard	HO-142	NO	3508	West Gate Drive	Ellicott City	ELLCOTT CITY	C03	HO-142	
MacAlpine Slave Quarters (Mr.&Mrs.RowlandBounds' H			Howard	HO-143	NO	3645	Mac Alpine Road	Ellicott City	ELLCOTT CITY	C03	HO-143	
Dundee			Howard	HO-211	NO	3775	Bonny Bridge Place	Ellicott City	ELLCOTT CITY	C03	HO-211	
Dundee Smokehouse			Howard	HO-212	NO		Bonny Bridge Place	Ellicott City	ELLCOTT CITY	C03	HO-212	
Broxton			Howard	HO-300	NO	3829	Old Columbia Pike (MD 987)	Ellicott City	ELLCOTT CITY	C03	HO-300	
Charles Ringley's House			Howard	HO-302	NO	3820	Old Columbia Pike (MD 987)	Ellicott City	ELLCOTT CITY	C03	HO-302	
Matthews-E.T. Clark House	257		Howard	HO-324	NO				ELLCOTT CITY	C03	257 / HO-324	
Mathews-E.T. Clark House			Howard	HO-324	NO	8765	Ruppert Court	Ellicott City	ELLCOTT CITY	C03	HO-324	
George White Shop			Howard	HO-334	NO	8624	Main Street	Ellicott City	ELLCOTT CITY	C03	HO-334	
William Moore House			Howard	HO-336	NO	8532-8534	Main Street	Ellicott City	ELLCOTT CITY	C03	HO-336	
Sam Caplan House (Burgess Tenant House, Miller's H			Howard	HO-338	NO	8454	Main Street	Ellicott City	ELLCOTT CITY	C03	HO-338	
Sam Caplan's Cottage, site			Howard	HO-339	NO	8454	Main Street	Ellicott City	ELLCOTT CITY	C03	HO-339	
Lilburn Mansion (Balderstone's Mansion, Hazeldene)			Howard	HO-353	NO	3899	College Avenue	Ellicott City	ELLCOTT CITY	C03	HO-353	
Lilburn Smokehouse			Howard	HO-354	NO	3899	College Avenue	Ellicott City	ELLCOTT CITY	C03	HO-354	
Lilburn Cottage			Howard	HO-355	NO	3899	College Avenue	Ellicott City	ELLCOTT CITY	C03	HO-355	
Essie Hammond House (Joseph & Ave Young House)			Howard	HO-364	NO	8777	Main Street	Ellicott City	ELLCOTT CITY	C03	HO-364	
St. John's Cemetery Lodge			Howard	HO-397	NO		St. John's Lane	Ellicott City	ELLCOTT CITY	C03	HO-397	
Mac Alpine			Howard	HO-400	NO	3621	MacAlpine Road	Ellicott City	ELLCOTT CITY	C03	HO-400	
The Lindens (Martelli House)			Howard	HO-415	NO	8514	Chapel View Road	Ellicott City	ELLCOTT CITY	C03	HO-415	
Catherine Kuhn House			Howard	HO-482	NO	8572	Main Street	Ellicott City	ELLCOTT CITY	C03	HO-482	
S.E. Yates House			Howard	HO-483	NO	8516	Main Street	Ellicott City	ELLCOTT CITY	C03	HO-483	
Union Dam, Mill Race, & B&O Tunnel			Howard	HO-534	NO		National Pike (US 40)	Ellicott City	ELLCOTT CITY	C03	HO-534	
Prestage's Folly			Howard	HO-558	NO	3832	Old Columbia Pike (MD 987)	Ellicott City	ELLCOTT CITY	C03	HO-558	
			Howard	HO-580	YES	8490	Main Street	Ellicott City	ELLCOTT CITY	C03	HO-580	
Colored School House			Howard	HO-585, 18HO218	NO		Frederick Road	Ellicott City	ELLCOTT CITY	C03	HO-585	
Lyons House, site			Howard	HO-588	NO		Ambra Court	Ellicott City	ELLCOTT CITY	C03	HO-588	
National Pike Milestone No. 11			Howard	HO-592	YES		Frederick Road	Ellicott City	ELLCOTT CITY	C03	HO-592	
National Pike Milestone No. 12			Howard	HO-593	YES		Frederick Road	Ellicott City	ELLCOTT CITY	C03	HO-593	
National Pike Milestone No. 13			Howard	HO-594	YES		Frederick Road	Ellicott City	ELLCOTT CITY	C03	HO-594	
Jonestown Road Bridge			Howard	HO-619	NO		Rogers Avenue (MD 99)	Ellicott City	ELLCOTT CITY	C03	HO-619	
St. Peter's Chapel	258		Howard		NO				ELLCOTT CITY	C03	258	
Former Hotel	256A		Howard		YES				ELLCOTT CITY	C03	256A	
Brick House	258A		Howard		NO				ELLCOTT CITY	C03	258A	
Early Stone and Brick Homes	258B		Howard		NO				ELLCOTT CITY	C03	258B	
Doughoregan Manor	254		Howard	HO-130	NO				SYKESVILLE	C04	254 / HO-130	
Doughoregan Manor Gate House			Howard	HO-130	NO	3120	Manor Lane	Ellicott City	SYKESVILLE	C04	HO-130	
Hopkins House	255		Howard	HO-137	YES	10281	National Pike (US 40)	Ellicott City	ELLCOTT CITY	C04	255 / HO-137	

Brosenne's Stone House (Pine Orchard Inn)	255		Howard	HO-137	YES	10281	National Pike (US 40)	Ellicott City	ELLICOTT CITY	C04	HO-137
Gerwig-Lintner House (Lintner Stone House)			Howard	HO-138	NO	10101	Frederick Road (MD 144)	Ellicott City	ELLICOTT CITY	C04	HO-138
Gray Rock (Grey Rock)			Howard	HO-412	NO	3518	Angus Valley Trail	Ellicott City	ELLICOTT CITY	C04	HO-412
Hoffman Farm			Howard	HO-560	NO	12393	Frederick Road (MD 144)	West Friendship	SYKESVILLE	C04	HO-560
National Pike Milestone No. 14			Howard	HO-595	YES		National Pike (US 40)	Ellicott City	ELLICOTT CITY	C04	HO-595
National Pike Milestone No. 15			Howard	HO-596	YES		Frederick Road (MD 144)	Ellicott City	SYKESVILLE	C04	HO-596
National Pike Milestone No. 16			Howard	HO-597	YES		Frederick Road (MD 144)	Ellicott City	SYKESVILLE	C04	HO-597
National Pike Milestone No. 17			Howard	HO-598	YES		Frederick Road (MD 144)	Ellicott City	SYKESVILLE	C04	HO-598
National Pike Milestone No. 18			Howard	HO-599	YES		Frederick Road (MD 144)	Ellicott City	SYKESVILLE	C04	HO-599
Bridge, U.S. 40 over Little Patuxent River(SHA#130			Howard	HO-649	YES		National Pike (US 40)	Ellicott City	ELLICOTT CITY	C04	HO-649
Bridge, Frederick Road over Little Patuxent (# HO-			Howard	HO-727	NO		Frederick Road	Ellicott City	ELLICOTT CITY	C04	HO-727
Foster's Country Store	252		Howard		YES				SYKESVILLE	C04	252
First Macedonia Baptist Church	251		Howard		NO				SYKESVILLE	C04	251
St. Charles College (Ruins)	253		Howard		NO				SYKESVILLE	C04	253
Gothic Cottage	253A		Howard		NO				SYKESVILLE	C04	253A
Stone House	254A		Howard		NO				SYKESVILLE	C04	254A
Red House Tavern			Howard	HO-004	NO		Hoods Mill Road (MD 97)	Cooksville	WOODBINE	C05	HO-004
The Joshua Roberts Inn			Howard	HO-005	YES	14610	Frederick Road (MD 144)	Cooksville	WOODBINE	C05	HO-005
Trusty Friend			Howard	HO-092	NO		Frederick Road (MD 144)	Cooksville	WOODBINE	C05	HO-092
Summer Hill Farm	247A		Howard	HO-117	NO				SYKESVILLE	C05	247A / HO-117
Dr. William J. Bryson House (Summer Hill Farm)			Howard	HO-117	NO		Frederick Road (MD 144)	Cooksville	WOODBINE	C05	HO-117
Shipley's Adventure (Dr. Perilla House)			Howard	HO-170	NO	14830	Old Frederick Road	Cooksville	WOODBINE	C05	HO-170
Log House	244		Howard	HO-181	NO				WOODBINE	C05	244 / HO-181
R. Hook Log House (Hackett Log House)			Howard	HO-181	NO	14465	Frederick Road (MD 144)	Cooksville	WOODBINE	C05	HO-181
Harmony Cemetery			Howard	HO-187	NO		McKendree Road	West Friendship	WOODBINE	C05	HO-187
Friendship Pines			Howard	HO-192	NO	13905	Frederick Road (MD 144)	Cooksville	SYKESVILLE	C05	HO-192
McKendree Cemetery	247		Howard	HO-240	NO				SYKESVILLE	C05	247 / HO-240
McKendree Methodist Church(Sharon Mission Baptist			Howard	HO-240	NO		McKendree Road	West Friendship	SYKESVILLE	C05	HO-240
Chippendale Farm (Justifiable)			Howard	HO-264	YES	14751	Addison Way	Woodbine	WOODBINE	C05	HO-264
Invasion (Dawn Acres)			Howard	HO-407	NO	13155	Frederick Road (MD 144)	West Friendship	SYKESVILLE	C05	HO-407
National Pike Milestone No. 20			Howard	HO-600	YES		Frederick Road (MD 144)	West Friendship	SYKESVILLE	C05	HO-600
National Pike Milestone No. 21			Howard	HO-601	YES		Frederick Road (MD 144)	West Friendship	SYKESVILLE	C05	HO-601
National Pike Milestone No. 22			Howard	HO-602	YES		Frederick Road (MD 144)	Cooksville	WOODBINE	C05	HO-602
National Pike Milestone No. 23			Howard	HO-603	YES		Frederick Road (MD 144)	Cooksville	WOODBINE	C05	HO-603
MD Ag Education Foundation	250		Howard		NO				SYKESVILLE	C05	250
Clearview Farm	249		Howard		NO				SYKESVILLE	C05	249
Former Hotel	243		Howard		YES				WOODBINE	C05	243
Full Gospel Baptist Church	245		Howard		NO				WOODBINE	C05	245
Old Dorsey Hotel	242		Howard		YES				WOODBINE	C05	242
og House	248		Howard		YES				SYKESVILLE	C05	248
St. Paul's Church	227		Howard	HO-101	NO				WOODBINE	C06	227 / HO-101
St. Paul's Episcopal Church			Howard	HO-101	NO		Old Frederick Road	Mt. Airy	WOODBINE	C06	HO-101
Oakley Farm (Celia Holland Home)			Howard	HO-291	NO	15802	Frederick Road (MD 144)	Woodbine	WOODBINE	C06	HO-291
Frog Range			Howard	HO-417	NO	15408	Frederick Road (MD 144)	Woodbine	WOODBINE	C06	HO-417
Lisbon Female Seminary	238		Howard	HO-495	NO				WOODBINE	C06	238 / HO-495
Lisbon Hotel	235		Howard	HO-495	YES				WOODBINE	C06	235 / HO-495
Former Harmony Presbyterian Church	236		Howard	HO-495	NO				WOODBINE	C06	236 / HO-495
US Post Office, Lisbon	237		Howard	HO-495	NO				WOODBINE	C06	237 / HO-495
Lisbon Historic District			Howard	HO-495	YES			Lisbon	WOODBINE	C06	HO-495
National Pike Milestone No. 24			Howard	HO-604	YES		Frederick Road (MD 144)	Woodbine	WOODBINE	C06	HO-604
National Pike Milestone No. 25			Howard	HO-605	YES		Frederick Road (MD 144)	Woodbine	WOODBINE	C06	HO-605
National Pike Milestone No. 26			Howard	HO-606	YES		Frederick Road (MD 144)	Woodbine	WOODBINE	C06	HO-606
National Pike Milestone No. 27			Howard	HO-607	YES		Frederick Road (MD 144)	Mt. Airy	WOODBINE	C06	HO-607
National Pike Milestone No. 28			Howard	HO-608	YES		Frederick Road (MD 144)	Mt. Airy	WOODBINE	C06	HO-608
Hopkins Spring Farm	241		Howard		NO				WOODBINE	C06	241
Farmstead	239		Howard		NO				WOODBINE	C06	239
Morgan Station Inn	240		Howard		YES				WOODBINE	C06	240
Charlie D. Pickett House	225		Howard		NO				WOODBINE	C06	225
Poplar Springs UMC	232		Howard		NO				WOODBINE	C06	232
Slagle Farm	233		Howard		NO				WOODBINE	C06	233
Spring	226		Howard		NO				WOODBINE	C06	226
St. Michael's Cathedral	229		Howard		NO				WOODBINE	C06	229
Simpson UMC	230		Howard		NO				WOODBINE	C06	230
Molesworth/Pickett Farm and Milkstand	234		Howard		NO				WOODBINE	C06	234
Old Drivers Stables	231		Howard		YES				WOODBINE	C06	231
Spaulding's Garage	228		Howard		YES				WOODBINE	C06	228
Former Hotel	224		Howard		YES				WOODBINE	C06	224
Warren UMC	221		Carroll	CARR-1105	NO				DAMASCUS	C07	221 / CARR-1105

Warren M.E. Church (Warren U.M. Church)			Carroll	CARR-1105	NO	801	East Ridgeville Boulevard	Mt. Airy	DAMASCUS	C07	CARR-1105
Twin Ach Bridge	223		Carroll	CARR-1563	NO				DAMASCUS	C07	223 / CARR-1563
Twin Arch Bridge (Twin Arch Road & CSX RR)			Carroll	CARR-1563	NO		Twin Arch Road	Mt. Airy	DAMASCUS	C07	CARR-1563
Parrs Spring			Carroll	CARR-37	NO		Frederick Road (MD 144)	Mt. Airy	DAMASCUS	C07	CARR-37
Ridgeville Methodist Church	216	CARR-549	Carroll	CARR-549	NO				DAMASCUS	C07	216 / CARR-549
Ridgeville U.M. Church (Ridgeville M.P. Church)			Carroll	CARR-549	NO		Ridgeville Blvd. (MD 144)	Mt. Airy	DAMASCUS	C07	CARR-549
Old National Pike Milestone No. 31			Carroll	CARR-662	YES		Ridgeville Road	Mt. Airy	DAMASCUS	C07	CARR-662
Mt. Airy RRStation	219		Carroll	F-5-117	YES			Mt. Airy	LIBERTYTOWN	C07	219 / F-5-117
Pine Grove Church and Cemetery	218		Carroll		NO				DAMASCUS	C07	218
Parrsville Elem School	220		Carroll		NO				DAMASCUS	C07	220
Borher's Garage	217		Carroll		YES				DAMASCUS	C07	217
Old Claude Brown Restaurant	215		Carroll		YES				DAMASCUS	C07	215
Victorian Manion	214		Carroll		NO				DAMASCUS	C07	214
Four County Farm	222		Carroll		NO				DAMASCUS	C07	222
Old Alignment	220A		Carroll		YES				DAMASCUS	C07	220A
Marvin Chapel United Methodist Church			Frederick	F-5-044	NO		Woodville Road	Mt. Airy	DAMASCUS	C07	F-5-044
Old National Pike Milestone #33			Frederick	F-5-064	YES		Old National Pike (MD144)	Mt. Airy	DAMASCUS	C07	F-5-064
Alfred G. Gartrell House			Frederick	F-5-095	NO	4940B	West Wind Drive	Mt. Airy	DAMASCUS	C07	F-5-095
Mt. Airy Railroad Tunnel	211A		Frederick	F-5-117	NO				DAMASCUS	C07	211A / F-5-117
Ridgeville Tunnel & Bartholows Rd. Arch, B&O RR	219		Frederick	F-5-117	YES			Mt. Airy	DAMASCUS	C07	F-5-117
Former Gas Station and Motel	210		Frederick		YES				DAMASCUS	C07	210
Brick Farmhouse	209		Frederick		NO				DAMASCUS	C07	209
Mt. Airy Railroad Tunnel	211B		Frederick		NO				DAMASCUS	C07	211B
Hahn's Pontiac Garage	212		Frederick		YES				DAMASCUS	C07	212
Gaver Tree Farm	209A		Frederick		NO				DAMASCUS	C07	209A
Nicholas Hall House (Charles Wood House)			Frederick	F-5-022	NO		Baldwin Road	New Market	WALKERSVILLE	C08	F-5-022
Marly Farms			Frederick	F-5-024	NO		Old New Market Road (MD 874)	New Market	WALKERSVILLE	C08	F-5-024
Mealey's Restaurant	204		Frederick	F-5-059	YES				WALKERSVILLE	C08	204 / F-5-059
New Market Historic District			Frederick	F-5-059	YES				WALKERSVILLE	C08	F-5-059
Ursula Plummer House			Frederick	F-5-060	NO			New Market	WALKERSVILLE	C08	F-5-060
Old National Pike Milestone #35			Frederick	F-5-065	YES		Old National Pike (MD144)	Mt. Airy	LIBERTYTOWN	C08	F-5-065
Old National Pike Milestone #36			Frederick	F-5-066	YES		Old National Pike (MD144)	Mt. Airy	LIBERTYTOWN	C08	F-5-066
Old National Pike Milestone #37			Frederick	F-5-067	YES		Main Street (MD 144)	New Market	WALKERSVILLE	C08	F-5-067
Old National Pike Milestone #38			Frederick	F-5-068	YES		Main Street (MD 144)	New Market	WALKERSVILLE	C08	F-5-068
Old National Pike Milestone #39			Frederick	F-5-069	YES		Old National Pike (MD144)	Mt. Airy	WALKERSVILLE	C08	F-5-069
Union Chapel of Bartholows(UpperRoomGospelTabernac			Frederick	F-5-073	NO		Old National Pike (MD144)	Mt. Airy	LIBERTYTOWN	C08	F-5-073
Joshua Brown House			Frederick	F-5-076	NO	12406	Old National Pike (MD144)	Mt. Airy	LIBERTYTOWN	C08	F-5-076
Samuel W. Dorsey Farmstead			Frederick	F-5-077	NO	12020	Old National Pike (MD144)	Mt. Airy	LIBERTYTOWN	C08	F-5-077
Ridgeville Tunnel & Bartholows Rd. Arch, B&O RR	219		Frederick	F-5-117	YES			Mt. Airy	DAMASCUS	C08	F-5-117
Peace and Plenty Rural Historic Landscape			Frederick	F-5-124	NO		Ben's Branch Valley	Mt. Airy	LIBERTYTOWN/WALKERSVI	C08	F-5-124
Tumside Farm	205		Frederick		YES				LIBERTYTOWN	C08	205
Potter's House Church/Union Chapel	206		Frederick		NO				LIBERTYTOWN	C08	206
Plain Four Farm	208		Frederick		NO				DAMASCUS	C08	208
Former Hotel	207		Frederick		YES				LIBERTYTOWN	C08	207
Old Gas Station	207A		Frederick		YES				LIBERTYTOWN	C08	207A
Mercer-Todd Farm (John E.W. Hargett House)			Frederick	F-3-053	NO	1501	East Patrick Street (MD 144)	Frederick	FREDERICK	C09	F-3-053
Old National Pike Milestone #43			Frederick	F-3-062	YES		East Patrick Street (MD 144)	Frederick	FREDERICK	C09	F-3-062
Old National Pike Milestone #44			Frederick	F-3-063	YES		East Patrick Street (MD 144)	Frederick	FREDERICK	C09	F-3-063
Frederick Toll House	201		Frederick	F-3-128	YES	8614	East Patrick Street (MD 144)	Frederick	WALKERSVILLE	C09	201 / F-3-128
Jug Bridge Toll House	201		Frederick	F-3-128	YES	8614	East Patrick Street (MD 144)	Frederick	WALKERSVILLE	C09	F-3-128
G. Trummel & E. South Street Houses			Frederick	F-3-143	NO	800-812	East South Street	Frederick	FREDERICK	C09	F-3-143
Hoke-Grove House (Lime Kiln Property)			Frederick	F-3-145	NO		East South Street & I-70	Frederick	FREDERICK	C09	F-3-145
Jackson Chapel Methodist Episcopal Church			Frederick	F-5-001	NO		Bartonsville Road	Frederick	WALKERSVILLE	C09	F-5-001
Mount Carmel United Methodist Church			Frederick	F-5-003	NO		Old National Pike (MD144)	Frederick	WALKERSVILLE	C09	F-5-003
John Hammond House(Holly Hills CountryClubBrickHou			Frederick	F-5-023	NO		Mussetter Road	Ijamsville	WALKERSVILLE	C09	F-5-023
Galilean Fisherman Hall			Frederick	F-5-051	NO		Bartonsville Road	Frederick	WALKERSVILLE	C09	F-5-051
Cordelia Dorsey House			Frederick	F-5-055	YES		Old National Pike (MD144)	Mt. Airy	WALKERSVILLE	C09	F-5-055
Jonas Thomas House			Frederick	F-5-058	NO		Bartonsville Road	Frederick	WALKERSVILLE	C09	F-5-058
William Walker House			Frederick	F-5-063	NO	5818	Tobery Road	Frederick	WALKERSVILLE	C09	F-5-063
Old National Pike Milestone #40			Frederick	F-5-070	YES		Old National Pike (MD144)	Mt. Airy	WALKERSVILLE	C09	F-5-070
Old National Pike Milestone #41			Frederick	F-5-071	YES		Old National Pike (MD144)	Frederick	WALKERSVILLE	C09	F-5-071
Old National Pike Milestone #42			Frederick	F-5-072	YES		Old National Pike (MD144)	Frederick	WALKERSVILLE	C09	F-5-072
Howard-Brangle-Rosenstock House(Manderley, Rosehav			Frederick	F-5-090	NO	6009	Linganore Road	Frederick	WALKERSVILLE	C09	F-5-090
T. Stuart Haller House (Sunnymeade)			Frederick	F-5-091	NO	9515	Baltimore Road	Frederick	WALKERSVILLE	C09	F-5-091
Grace Trinity Reformed Church	203		Frederick		NO				WALKERSVILLE	C09	203
Jug Bridge Monument	200		Frederick		YES				FREDERICK	C09	200
Old Alignment	202		Frederick		YES				WALKERSVILLE	C09	202
Mount Carmel UMC	202A		Frederick		NO				WALKERSVILLE	C09	202A

Swinging Bridge			Frederick	F-3-008	NO		College Terrace	Frederick	FREDERICK	C10	F-3-008
Nat'l Mus. of Civil War Medicine	193		Frederick	F-3-039	NO				FREDERICK	C10	193 / F-3-039
Barbara Fritchie House	189	NRHP listed	Frederick	F-3-039, 18FR636	NO				FREDERICK	C10	189 / F-3-039
The Tivoli	191		Frederick	F-3-039	NO				FREDERICK	C10	191 / F-3-039
Frederick Armory	192	85002672	Frederick	F-3-039	NO				FREDERICK	C10	192 / F-3-039
Hanson-Thos. House	190		Frederick	F-3-039	NO				FREDERICK	C10	190 / F-3-039
Loats Asylum	194	72000580	Frederick	F-3-039	NO				FREDERICK	C10	194 / F-3-039
Frederick Historic District			Frederick	F-3-039	NO			Frederick	FREDERICK	C10	F-3-039
Guilford (Ellmar, Homewood, Resurvey of Locust Lev			Frederick	F-3-040	NO	5927	New Design Road	Frederick	FREDERICK	C10	F-3-040
Everedy Square and Shab Row	197		Frederick	F-3-056	YES				FREDERICK	C10	197 / F-3-056
Trompe L'Oeil Bridge Mural	195		Frederick	F-3-056	NO				FREDERICK	C10	195 / F-3-056
Old Log Wash House	198		Frederick	F-3-056	NO				FREDERICK	C10	198 / F-3-056
Former Spoke Factory	196		Frederick	F-3-056	YES				FREDERICK	C10	196 / F-3-056
Frederick Survey District			Frederick	F-3-056	NO			Frederick	FREDERICK	C10	F-3-056
Frederick Survey District			Frederick	F-3-056	NO			Frederick	FREDERICK	C10	F-3-056
Frederick Survey District			Frederick	F-3-056	NO			Frederick	FREDERICK	C10	F-3-056
Frederick Survey District			Frederick	F-3-056	NO			Frederick	FREDERICK	C10	F-3-056
Old National Pike Milestone #45			Frederick	F-3-064	YES		East Patrick Street (MD 144)	Frederick	FREDERICK	C10	F-3-064
Old National Pike Milestone #46			Frederick	F-3-065	YES		West Patrick Street (MD 144)	Frederick	FREDERICK	C10	F-3-065
Old National Pike Milestone #48			Frederick	F-3-066	YES		Old National Pike (Alt. US 40)	Frederick	FREDERICK	C10	F-3-066
George Rizer Farm House			Frederick	F-3-067	NO	211	South Jefferson Street	Frederick	FREDERICK	C10	F-3-067
Linden Grove (E.Howard Farm,W.M.BeallFarm,RockyCre			Frederick	F-3-102	NO		Solarex Court	Frederick	FREDERICK	C10	F-3-102
Braddock Survey District (Fair View)			Frederick	F-3-112	YES	5519-5707	Old National Pike (Alt. US 40)	Frederick	FREDERICK	C10	F-3-112
Guilford Tenant House (Lee Farm Tenant House)			Frederick	F-3-153	NO	5927	New Design Road	Frederick	FREDERICK	C10	F-3-153
Highland Lodge (Pequea)			Frederick	F-3-157	NO	5519	Old National Pike (Alt. US 40)	Frederick	FREDERICK	C10	F-3-157
Braddock Heights Survey District			Frederick	F-4-008	NO			Frederick	MIDDLETOWN	C10	F-4-008
Brick House	188		Frederick		NO				FREDERICK	C10	188
Wayside Inn	199		Frederick		YES				FREDERICK	C10	199
Braddock Lutheran Chapel			Frederick	F-3-107	NO	6938	North Clifton Road	Frederick	FREDERICK	C11	F-3-107
McSherry-Holter House			Frederick	F-3-130	NO	6936	Holter Vista Road	Frederick	FREDERICK	C11	F-3-130
Edward Y. Goldsborough House			Frederick	F-3-133	NO	6739	South Clifton Road	Frederick	FREDERICK	C11	F-3-133
John Hagan's Tavern	187		Frederick	F-3-135	YES	5018A	Old National Pike (Alt. US 40)	Frederick	FREDERICK	C11	187 / F-3-135
Hagan's Tavern (The Old White House)	187		Frederick	F-3-135	YES	5018A	Old National Pike (Alt. US 40)	Frederick	FREDERICK	C11	F-3-135
Haller House	186		Frederick	F-4-008	NO				MIDDLETOWN	C11	186 / F-4-008
George Bowlus House			Frederick	F-4-014	NO		West Main Street (Alt. US 40)	Middletown	MIDDLETOWN	C11	F-4-014
Catoctin Creek Bridge	180		Frederick	F-4-026	YES		Old National Pike (Alt. US 40)	Middletown	MIDDLETOWN	C11	180 / F-4-026
U.S. 40A Catoctin Creek Bridge	180		Frederick	F-4-026	YES		Old National Pike (Alt. US 40)	Middletown	MIDDLETOWN	C11	F-4-026
Motter's Tavern	184		Frederick	F-4-030	YES	4253	Old National Pike (Alt. US 40)	Middletown	MIDDLETOWN	C11	184 / F-4-030
Motter's Tavern (Fountaindale Inn)	184		Frederick	F-4-030	YES	4253	Old National Pike (Alt. US 40)	Middletown	MIDDLETOWN	C11	F-4-030
Daniel Kefauver Farmstead & Mill Site			Frederick	F-4-036	NO	4240A	Old National Pike (Alt. US 40)	Middletown	MIDDLETOWN	C11	F-4-036
Airview Survey District			Frederick	F-4-038	NO	701-720	East Main Street (Alt. US 40)	Middletown	MIDDLETOWN	C11	F-4-038
Commercial Bldgs	182		Frederick	F-4-039	NO				MIDDLETOWN	C11	182 / F-4-039
Zion Lutheran Church	183		Frederick	F-4-039	NO				MIDDLETOWN	C11	183 / F-4-039
Middletown City Hall	183A		Frederick	F-4-039	NO				MIDDLETOWN	C11	183A / F-4-039
Middletown Survey District			Frederick	F-4-039	YES			Middletown	MIDDLETOWN	C11	F-4-039
Spoolsville Survey District			Frederick	F-4-044	YES			Middletown	MIDDLETOWN	C11	F-4-044
Old National Pike Milestone #50			Frederick	F-4-071	YES		Old National Pike (Alt. US 40)	Frederick	FREDERICK	C11	F-4-071
Old National Pike Milestone #51			Frederick	F-4-072	YES		Old National Pike (Alt. US 40)	Middletown	MIDDLETOWN	C11	F-4-072
Old National Pike Milestone #52			Frederick	F-4-073	YES		Old National Pike (Alt. US 40)	Middletown	MIDDLETOWN	C11	F-4-073
Old National Pike Milestone #53			Frederick	F-4-074	YES		East Main Street (Alt. US 40)	Middletown	MIDDLETOWN	C11	F-4-074
Old National Pike Milestone #54			Frederick	F-4-075	YES		Old National Pike (Alt. US 40)	Middletown	MIDDLETOWN	C11	F-4-075
Windswept (High Hope)			Frederick	F-4-081	NO	7014	Ridge Road	Frederick	MIDDLETOWN	C11	F-4-081
Keller-Hargett House (Frederick Dahlia Gardens)			Frederick	F-4-082	YES	4851	Old National Pike (Alt. US 40)	Frederick	MIDDLETOWN	C11	F-4-082
Charles M. Brane House			Frederick	F-4-084	NO	7105	Willow Tree Drive	Middletown	MIDDLETOWN	C11	F-4-084
J. Hanson Shafer Farmstead			Frederick	F-4-090	NO	2817	Marker Road	Middletown	MIDDLETOWN	C11	F-4-090
Braddock Monument			Frederick	F-4-100	YES		Old National Pike (Alt. US 40)	Frederick	FREDERICK	C11	F-4-100
Possible Tavern	181		Frederick		YES				MIDDLETOWN	C11	181
Braddock Heights Overlook	185		Frederick		YES				MIDDLETOWN	C11	185
Stone Bridge	181A		Frederick		YES				MIDDLETOWN	C11	181A
Garage	186A		Frederick		YES				MIDDLETOWN	C11	186A
Ellerton Road Bridge			Frederick	F-4-006	NO		Harmony Road	Myersville	MIDDLETOWN	C12	F-4-006
Bolivar Survey District			Frederick	F-4-037	NO	2222-2308	Old National Pike (Alt. US 40)	Middletown	MIDDLETOWN	C12	F-4-037
John F. Horine House			Frederick	F-4-042	NO	9236 A & B	Hollow Road	Middletown	MIDDLETOWN	C12	F-4-042
Harmony Survey District (Beallsville)			Frederick	F-4-052	NO			Myersville	MIDDLETOWN	C12	F-4-052
Schlosser-Waters Farmstead (Pilgrim's Harbour)			Frederick	F-4-070	NO	9232	Harmony Road	Myersville	MIDDLETOWN	C12	F-4-070
Old National Pike Milestone #56			Frederick	F-4-076	YES		Old National Pike (Alt. US 40)	Middletown	MIDDLETOWN	C12	F-4-076
Bridge, US 40 over Br. of Little Catoctin Cr.(#100			Frederick	F-4-102	YES		National Pike (US 40)	Middletown	MIDDLETOWN	C12	F-4-102
Pettingall-Bussard Farm			Frederick	F-4-114	NO	8836	Hollow Road	Middletown	MIDDLETOWN	C12	F-4-114

Bridge, US 40 over Little Catactin Creek (SHA #100)		Frederick	F-4-117	YES		National Pike (US 40)	Middletown	MIDDLETOWN	C12	F-4-117
Marameade	179	Frederick		NO				MIDDLETOWN	C12	179
Early House	178	Frederick		NO				MIDDLETOWN	C12	178
Henry Shoemaker House	177A	Frederick		YES				MIDDLETOWN	C12	177A
Wind Swept	179A	Frederick		NO				MIDDLETOWN	C12	179A
Myersville Survey District		Frederick	F-4-053	NO			Myersville	MYERSVILLE	C13	F-4-053
Harshman-Frushour Farmstead (H. & F. Trolley Shelt		Frederick	F-4-057	NO	11423	Meeting House Road	Myersville	MYERSVILLE	C13	F-4-057
Rout-Smith Farmstead (The Seven Partners)		Frederick	F-4-080	NO	11025	Pleasant Walk Road	Myersville	MYERSVILLE	C13	F-4-080
Bridge, US 40 over Catactin Creek (SHA #10030)		Frederick	F-4-115	YES		National Pike (US 40)	Myersville	MYERSVILLE	C13	F-4-115
Bridge, US 40 over Middle Creek (SHA #10031)		Frederick	F-4-116	YES		National Pike (US 40)	Myersville	MYERSVILLE	C13	F-4-116
Henry Shoemaker Farmhouse		Frederick	F-4-016	YES	2136	Old National Pike (Alt. US 40)	Middletown	MIDDLETOWN	C14	F-4-016
Old South Mountain Inn	174	Frederick	F-4-017-C	YES				MIDDLETOWN	C14	174 / F-4-017-C
Turner's Gap (South Mountain Battlefield)		Frederick	F-4-017-C	YES			Middletown	MIDDLETOWN	C14	F-4-017-C
Beachley House (White House Inn)		Frederick	F-4-029	YES	1811	Old National Pike (Alt. US 40)	Middletown	MIDDLETOWN	C14	F-4-029
Beachley House	175	Frederick	F-4-029, F-4-017-C	YES				MIDDLETOWN	C14	175 / F-4-029, F-4-017-C
Dahlgren Chapel (Chpl Of St. Joseph Of The Sacred Heart Of Je		Frederick	F-4-043	NO		Old National Pike (Alt. US 40)	Middletown	MIDDLETOWN	C14	F-4-043
Dahlgren Chapel	173	Frederick	F-4-043, F-4-017-C	NO				MIDDLETOWN	C14	173 / F-4-043, F-4-017-C
Old National Pike Milestone #57		Frederick	F-4-077	YES		Old National Pike (Alt. US 40)	Middletown	MIDDLETOWN	C14	F-4-077
Old National Pike Milestone #58		Frederick	F-4-078	YES		Old National Pike (Alt. US 40)	Middletown	MIDDLETOWN	C14	F-4-078
Jonas Sheffer Farm	176	Frederick	F-4-122	NO				MIDDLETOWN	C14	176 / F-4-122
Jonas Sheffer Farm		Frederick	F-4-122	NO	1936	Old National Pike (Alt. US 40)	Middletown	MIDDLETOWN	C14	F-4-122
Jonas Sheffer Farm		Frederick	F-4-122	NO	1936	Old National Pike (Alt. US 40)	Middletown	MIDDLETOWN	C14	F-4-122
Old National Pike (Hagerstown Turnpike, Alt. US 40		Frederick	F-4-123	YES		Old National Pike (Alt. US 40)	Middletown	MIDDLETOWN	C14	F-4-123
Kepler Farm	177	Frederick	F-4-124	NO				MIDDLETOWN	C14	177 / F-4-124
Kepler Farm		Frederick	F-4-124	NO	2111	Old National Pike (Alt. US 40)	Middletown	MIDDLETOWN	C14	F-4-124
Dahlgren Road (Old Hagerstown Road, Frostown Road)		Frederick	F-4-126	NO		Dahlgren Road	Middletown	MIDDLETOWN	C14	F-4-126
Ridge Road (Mountain Road)		Frederick	F-4-127	NO		Reno Monument Road	Middletown	MIDDLETOWN	C14	F-4-127
Stone Wall, Dahlgren Campground (P. Butler Propert		Frederick	F-4-128	NO		Old National Pike (Alt. US 40)	Middletown	MIDDLETOWN	C14	F-4-128
Colquitt's Stone Wall		Frederick	F-4-130	NO		Old National Pike (Alt. US 40)	Middletown	MIDDLETOWN	C14	F-4-130
Old South Mountain Inn (South Mountain House)		Washington	WA-II-0001	NO		Old National Pike (Alt. US 40)	Boonsboro	MIDDLETOWN	C14	WA-II-0001
Log House		Washington	WA-II-0002	NO		Old National Pike (Alt. US 40)	Boonsboro	MIDDLETOWN	C14	WA-II-0002
Sheathed Log House		Washington	WA-II-0003	NO		Old National Pike (Alt. US 40)	Boonsboro	MIDDLETOWN	C14	WA-II-0003
Sheathed Log House		Washington	WA-II-0004	NO		Old National Pike (Alt. US 40) & Moser Rd	Boonsboro	MIDDLETOWN	C14	WA-II-0004
Moser Farm		Washington	WA-II-0005	NO		Old National Pike (Alt. US 40)	Boonsboro	KEEDYSVILLE	C14	WA-II-0005
19th Century Brick House		Washington	WA-II-0006	NO		Old National Pike (Alt. US 40)	Boonsboro	KEEDYSVILLE	C14	WA-II-0006
Aluminum Sided House		Washington	WA-II-0007	NO		Old National Pike (Alt. US 40)	Boonsboro	KEEDYSVILLE	C14	WA-II-0007
Mint Spring Farm		Washington	WA-II-0047	NO		Mousetown Road	Boonsboro	FUNKSTOWN	C14	WA-II-0047
Old National Pike Milestone #59		Washington	WA-II-0725	YES		Old National Pike (Alt. US 40)	Boonsboro	KEEDYSVILLE	C14	WA-II-0725
Old National Pike Milestone #60		Washington	WA-II-0726	YES		Old National Pike (Alt. US 40)	Boonsboro	KEEDYSVILLE	C14	WA-II-0726
Early House	165	Washington	WA-II-0981	NO				FUNKSTOWN	C14	165 / WA-II-0981
Early Bldgs	162	Washington	WA-II-0981	NO				FUNKSTOWN	C14	162 / WA-II-0981
Geo. Messner Residence	161	Washington	WA-II-0981	NO				FUNKSTOWN	C14	161 / WA-II-0981
Bowman Log House	159	77000702	Washington	WA-II-0981	NO			FUNKSTOWN	C14	159 / WA-II-0981
Log House	163	Washington	WA-II-0981	NO				FUNKSTOWN	C14	163 / WA-II-0981
King Farmstead	164	Washington	WA-II-0981	NO				FUNKSTOWN	C14	164 / WA-II-0981
Boonsborough Museum of History	160	Washington	WA-II-0981	NO				FUNKSTOWN	C14	160 / WA-II-0981
Brick House	164A	Washington	WA-II-0981	NO				FUNKSTOWN	C14	164A / WA-II-0981
Former Garage	165A	Washington	WA-II-0981	YES				FUNKSTOWN	C14	165A / WA-II-0981
Town of Boonsboro		Washington	WA-II-0981	YES			Boonsboro	FUNKSTOWN/KEEDYSVILLE	C14	WA-II-0981
Reno Monument	172	Washington		YES				KEEDYSVILLE	C14	172
Washington Monument	169	Washington		YES				MYERSVILLE	C14	169
Garage	167	Washington		YES				KEEDYSVILLE	C14	167
Former Garage	168	Washington		YES				KEEDYSVILLE	C14	168
Glendale	170	Washington		NO				KEEDYSVILLE	C14	170
Reeder's Home	166	Washington		YES				FUNKSTOWN	C14	166
Garland Marker	171B	Washington		YES				KEEDYSVILLE	C14	171B
Boonsboro Cemetery	165B	Washington		YES				FUNKSTOWN	C14	165B
Stonewall Regiment Marker	171A	Washington		YES				KEEDYSVILLE	C14	171A
Brick House		Washington	WA-II-0008	NO		North Main St. (Alt US40)	Boonsboro	FUNKSTOWN	C15	WA-II-0008
Stone and Brick House, Part of Security		Washington	WA-II-0037	NO		Old National Pike (Alt. US 40)	Boonsboro	FUNKSTOWN	C15	WA-II-0037
Loudenslager Farm		Washington	WA-II-0038	NO		Old National Pike (Alt. US 40)	Boonsboro	FUNKSTOWN	C15	WA-II-0038
Shifter House		Washington	WA-II-0039	YES		Old National Pike (Alt. US 40)	Boonsboro	FUNKSTOWN	C15	WA-II-0039
Avey Farm		Washington	WA-II-0041	NO		Old National Pike (Alt. US 40)	Boonsboro	FUNKSTOWN	C15	WA-II-0041
Newcomer's Mill Bridge	153	Washington	WA-II-0042	YES		Old National Pike (Alt. US 40)	Boonsboro	FUNKSTOWN	C15	153 / WA-II-0042
Newcomer's Mill Bridge (Kline's Mill Bridge) (#210	153	Washington	WA-II-0042	YES		Old National Pike (Alt. US 40)	Boonsboro	FUNKSTOWN	C15	WA-II-0042
Part of Lenafield		Washington	WA-II-0048	NO		Mapleville Road (MD 66)	Boonsboro	FUNKSTOWN	C15	WA-II-0048
Wyand House		Washington	WA-II-0049	NO		Old National Pike (Alt. US 40)	Boonsboro	FUNKSTOWN	C15	WA-II-0049
Murphy House (Doub Farm)		Washington	WA-II-0079	NO		Old National Pike (Alt. US 40)	Boonsboro	FUNKSTOWN	C15	WA-II-0079

Benevola United Methodist Church		Washington	WA-II-0200	NO		Benevola Church Road	Boonsboro	FUNKSTOWN	C15	WA-II-0200
Balloon Frame House		Washington	WA-II-0207	NO		Old National Pike (Alt. US 40)	Boonsboro	FUNKSTOWN	C15	WA-II-0207
Benevola Church Parsonage		Washington	WA-II-0208	NO		Newcomer Road & Alt. US 40	Boonsboro	FUNKSTOWN	C15	WA-II-0208
Green Meadows		Washington	WA-II-0209	NO		Newcomer Road	Boonsboro	FUNKSTOWN	C15	WA-II-0209
Barren Hill		Washington	WA-II-0210	NO		Old National Pike (Alt. US 40)	Boonsboro	FUNKSTOWN	C15	WA-II-0210
Frame House		Washington	WA-II-0212	NO		Old National Pike (Alt. US 40)	Boonsboro	FUNKSTOWN	C15	WA-II-0212
Stone and Brick House		Washington	WA-II-0213	NO		Old Roxbury Road	Boonsboro	FUNKSTOWN	C15	WA-II-0213
Late 19th Century Brick House		Washington	WA-II-0215	NO		Old National Pike (Alt. US 40)	Boonsboro	FUNKSTOWN	C15	WA-II-0215
Victorian Cottage		Washington	WA-II-0216	NO		Old National Pike (Alt. US 40)	Boonsboro	FUNKSTOWN	C15	WA-II-0216
Harmony Hill School		Washington	WA-II-0217	NO		Old National Pike (Alt. US 40)	Boonsboro	FUNKSTOWN	C15	WA-II-0217
Toll Keeper's House		Washington	WA-II-0221	YES		Old National Pike (Alt. US 40)	Boonsboro	FUNKSTOWN	C15	WA-II-0221
Brick Farmhouse		Washington	WA-II-0488	NO		Old National Pike (Alt. US 40)	Boonsboro	FUNKSTOWN	C15	WA-II-0488
Yellow House Liquors		Washington	WA-II-0489	NO		Old National Pike (Alt. US 40)	Boonsboro	FUNKSTOWN	C15	WA-II-0489
Frame House		Washington	WA-II-0490	NO		Old National Pike (Alt. US 40)	Boonsboro	FUNKSTOWN	C15	WA-II-0490
Frame House		Washington	WA-II-0491	NO		Old National Pike (Alt. US 40)	Boonsboro	FUNKSTOWN	C15	WA-II-0491
Frame House		Washington	WA-II-0492	NO		Old National Pike (Alt. US 40)	Boonsboro	FUNKSTOWN	C15	WA-II-0492
Frame House		Washington	WA-II-0493	NO		Old National Pike (Alt. US 40)	Boonsboro	FUNKSTOWN	C15	WA-II-0493
Board and Batten House		Washington	WA-II-0494	NO		Old National Pike (Alt. US 40)	Boonsboro	FUNKSTOWN	C15	WA-II-0494
Frame House		Washington	WA-II-0495	NO		Old National Pike (Alt. US 40)	Boonsboro	FUNKSTOWN	C15	WA-II-0495
Stone Bungalow		Washington	WA-II-0496	NO		Alt. US 40 & Benevola Church Road	Boonsboro	FUNKSTOWN	C15	WA-II-0496
Frame House		Washington	WA-II-0497	NO		Old National Pike (Alt. US 40)	Boonsboro	FUNKSTOWN	C15	WA-II-0497
Old National Pike Milestone #63		Washington	WA-II-0728	YES		Old National Pike (Alt. US 40)	Boonsboro	FUNKSTOWN	C15	WA-II-0728
Old National Pike Milestone #64		Washington	WA-II-0729	YES		Old National Pike (Alt. US 40)	Boonsboro	FUNKSTOWN	C15	WA-II-0729
Garage	158	Washington	WA-II-0981	YES				FUNKSTOWN	C15	158 / WA-II-0981
Bridge, Old Roxbury Rd. over Beaver Creek (SHA #W-53)		Washington	WA-II-1117	NO		Old Roxbury Road	Boonsboro	FUNKSTOWN	C15	WA-II-1117
Old Pike Inn	156	Washington		YES				FUNKSTOWN	C15	156
Four-Square Houses	157	Washington		NO				FUNKSTOWN	C15	157
Kline's Mill	154	Washington		NO				FUNKSTOWN	C15	154
Stone House	155	Washington		NO				FUNKSTOWN	C15	155
Farmstead	154A	Washington		NO				FUNKSTOWN	C15	154A
Schindel Farm		Washington	WA-I-275	NO		Old National Pike (Alt. US 40)	Hagerstown	FUNKSTOWN	C16	WA-I-275
Rocky Spring Farm		Washington	WA-I-418	NO		Old National Pike (Alt. US 40)	Hagerstown	FUNKSTOWN	C16	WA-I-418
Good Spirits Farm		Washington	WA-I-419	NO		Old National Pike (Alt. US 40)	Hagerstown	FUNKSTOWN	C16	WA-I-419
Hillside Lake Farm		Washington	WA-I-420	NO		Old National Pike (Alt. US 40)	Hagerstown	FUNKSTOWN	C16	WA-I-420
Rocky Knolls		Washington	WA-I-423	NO		Old National Pike (Alt. US 40)	Hagerstown	FUNKSTOWN	C16	WA-I-423
Weddle Stone and Brick Farmhouse		Washington	WA-I-451	NO		National Pike (US 40)	Hagerstown	FUNKSTOWN	C16	WA-I-451
Old National Pike Milestone #67		Washington	WA-I-524	YES		Old National Pike (Alt. US 40)	Hagerstown	FUNKSTOWN	C16	WA-I-524
Wagner House		Washington	WA-II-0053	NO		Beaver Creek Road	Boonsboro	FUNKSTOWN	C16	WA-II-0053
Newcomer Mill (Part of Doub's Mill Complex)		Washington	WA-II-0054	NO		Beaver Creek Road	Hagerstown	FUNKSTOWN	C16	WA-II-0054
Crick Hollow Farm (Part of Resurvey on Stull's Fore		Washington	WA-II-0086	NO		Beaver Creek Road	Hagerstown	FUNKSTOWN	C16	WA-II-0086
Shank Farm		Washington	WA-II-0088	NO		Beaver Creek & Cool Hollow Roads	Hagerstown	FUNKSTOWN	C16	WA-II-0088
Doub's Mill House (Newcomer's Mill House)		Washington	WA-II-0089	NO		Beaver Creek Road	Hagerstown	FUNKSTOWN	C16	WA-II-0089
Doub's Mill Historic District (& Doub's Mill)		Washington	WA-II-0090	NO			Hagerstown	FUNKSTOWN	C16	WA-II-0090
Doub's Mill Tenant House (Newcomer's Mill Tenant Hou		Washington	WA-II-0091	NO		Beaver Creek & Cool Hollow Roads	Hagerstown	FUNKSTOWN	C16	WA-II-0091
Shank Farm (Part of Resurvey on Stull's Forest)		Washington	WA-II-0097	NO		Cool Hollow Road	Hagerstown	FUNKSTOWN	C16	WA-II-0097
Cheshelm (Weagley House)		Washington	WA-II-0098	NO		Beaver Creek & Beaver Creek Church Roads	Hagerstown	FUNKSTOWN	C16	WA-II-0098
Christian Newcomer House (Lakin Farm)		Washington	WA-II-0099	NO		National Pike (US 40)	Boonsboro	FUNKSTOWN	C16	WA-II-0099
Cool Hollow Culvert		Washington	WA-II-0131	YES		Old National Pike (Alt. US 40)	Hagerstown	FUNKSTOWN	C16	WA-II-0131
Beaver Creek Church of the Brethren		Washington	WA-II-0141	NO		Dunkard Church Road	Hagerstown	FUNKSTOWN	C16	WA-II-0141
Adams-Paulsgrove Farm		Washington	WA-II-0142	NO		Beaver Creek Road	Hagerstown	FUNKSTOWN	C16	WA-II-0142
Grossnickle Farm		Washington	WA-II-0143	NO		Beaver Creek Road	Hagerstown	FUNKSTOWN	C16	WA-II-0143
Mount Lena (Smoketown)		Washington	WA-II-0166	NO		Mount Lena Road	Boonsboro	FUNKSTOWN/MYERSVILLE	C16	WA-II-0166
Brick House		Washington	WA-II-0173	NO		National Pike (US 40)	Hagerstown	FUNKSTOWN	C16	WA-II-0173
Tollgate House		Washington	WA-II-0177	YES		Old National Pike (Alt. US 40)	Hagerstown	FUNKSTOWN	C16	WA-II-0177
Cool Hollow House		Washington	WA-II-0195	NO		Old National Pike (Alt. US 40)	Hagerstown	FUNKSTOWN	C16	WA-II-0195
Frame House and Stone Barn		Washington	WA-II-0206	NO		Old National Pike (Alt. US 40)	Hagerstown	FUNKSTOWN	C16	WA-II-0206
Ruins of Stone Farmstead		Washington	WA-II-0228	NO		National Pike (US 40)	Hagerstown	FUNKSTOWN	C16	WA-II-0228
U.S. 40 Bridge over Beaver Creek		Washington	WA-II-0476	YES		National Pike (US 40)	Hagerstown	FUNKSTOWN	C16	WA-II-0476
Old National Pike Milestone #65		Washington	WA-II-0730	YES		Old National Pike (Alt. US 40)	Hagerstown	FUNKSTOWN	C16	WA-II-0730
Bridge, U.S. 40 over Landis Spring Branch (SHA#210		Washington	WA-II-1113	YES		National Pike (US 40)	Funkstown	FUNKSTOWN	C16	WA-II-1113
Cool Hollow House	152	Washington		NO				FUNKSTOWN	C16	152
Rose Mill	151	Washington		NO				FUNKSTOWN	C16	151
Fulton Farmstead	152A	Washington		NO				FUNKSTOWN	C16	152A
Fox-Deceived Farm (Old Stonebraker Farm)		Washington	WA-HAG-155	NO		Howell Road & South Edgewood Drive	Hagerstown	FUNKSTOWN	C17	WA-HAG-155
Farmstead		Washington	WA-HAG-177	NO		Howell Road	Hagerstown	FUNKSTOWN	C17	WA-HAG-177
Farm Complex		Washington	WA-I-027	YES		Old National Pike (Alt. US 40)	Hagerstown	FUNKSTOWN	C17	WA-I-027
Three Arch Bridge	149	Washington	WA-I-028	YES		East Oak Ridge Drive	Funkstown	FUNKSTOWN	C17	149 / WA-I-028
Funkstown Bridge #2 (Shafer's Mill Bridge) (#W4001	149	Washington	WA-I-028	YES		East Oak Ridge Drive	Funkstown	FUNKSTOWN	C17	WA-I-028

First Funkstown Bridge (Funkstown Turnpike Bridge)			Washington	WA-I-029	YES		Old National Pike (Alt. US 40)	Funkstown	FUNKSTOWN	C17	WA-I-029
Knode-Schnebley Farm			Washington	WA-I-251	NO		East Oak Ridge Drive	Funkstown	FUNKSTOWN	C17	WA-I-251
Baker-Hebb Farm (Samuel Baker's Home Place)			Washington	WA-I-431	NO		Hebb Road	Hagerstown	FUNKSTOWN	C17	WA-I-431
Brick Farmhouse			Washington	WA-I-434	NO		Day Road	Hagerstown	FUNKSTOWN	C17	WA-I-434
Demolished Log House			Washington	WA-I-438	NO		Mount Aetna Road	Hagerstown	FUNKSTOWN	C17	WA-I-438
Part of Madcap's Meadow			Washington	WA-I-449	NO		Day Road	Hagerstown	FUNKSTOWN	C17	WA-I-449
Mid 19th Century Brick Farmhouse			Washington	WA-I-454	NO		Old National Pike (Alt. US 40)	Hagerstown	FUNKSTOWN	C17	WA-I-454
Old National Pike Milestone #68			Washington	WA-I-525	YES		Old National Pike (Alt. US 40)	Funkstown	FUNKSTOWN	C17	WA-I-525
Battle of Funkstown Marker	150		Washington		YES				FUNKSTOWN	C17	150
Angela Kirkham Davis House	149A		Washington		YES				FUNKSTOWN	C17	149A
Log/Stone House	149B		Washington		NO				FUNKSTOWN	C17	149B
Stone House	149C		Washington		NO				FUNKSTOWN	C17	149C
Keller House	149D		Washington		YES				FUNKSTOWN	C17	149D
Commercial Bldg	150A		Washington		NO				FUNKSTOWN	C17	150A
Former Garage	150B		Washington		YES				FUNKSTOWN	C17	150B
Hagerstown RR Station	136	6001019	Washington	WA-HAG-002	YES		Burhans Boulevard	Hagerstown	HAGERSTOWN	C18	136 / WA-HAG-002
Western Maryland Railway Station	136	6001019	Washington	WA-HAG-002	YES		Burhans Boulevard	Hagerstown	HAGERSTOWN	C18	WA-HAG-002
South Prospect Street Historic District			Washington	WA-HAG-087	NO		South Prospect Street	Hagerstown	HAGERSTOWN	C18	WA-HAG-087
Old Washington Co Library	138	78001018	Washington	WA-HAG-143	NO				HAGERSTOWN	C18	138 / WA-HAG-143
Maryland Theatre	140	76001015	Washington	WA-HAG-143	NO				HAGERSTOWN	C18	140 / WA-HAG-143
Colonial Theatre	141	8001478	Washington	WA-HAG-143	NO				HAGERSTOWN	C18	141 / WA-HAG-143
Washington Co Courthouse	145A		Washington	WA-HAG-143	NO				HAGERSTOWN	C18	145A / WA-HAG-143
Hagerstown Commercial Core Historic District			Washington	WA-HAG-143	YES			Hagerstown	HAGERSTOWN	C18	WA-HAG-143
Hager House	143	74000974	Washington	WA-HAG-156	YES				HAGERSTOWN	C18	143 / WA-HAG-156
Hagerstown City Park Historic District			Washington	WA-HAG-156	NO			Hagerstown	HAGERSTOWN	C18	WA-HAG-156
Fairground Gates	147		Washington	WA-HAG-158	YES				HAGERSTOWN	C18	147 / WA-HAG-158
Ebenezer AME Church	146		Washington	WA-HAG-158	NO				HAGERSTOWN	C18	146 / WA-HAG-158
Congregation B'nai Abraham	142		Washington	WA-HAG-158	NO				HAGERSTOWN	C18	142 / WA-HAG-158
Price-Miller House	137	76001018	Washington	WA-HAG-158	NO				HAGERSTOWN	C18	137 / WA-HAG-158
Hagerstown Charity School	144	82001601	Washington	WA-HAG-158	NO				HAGERSTOWN	C18	144 / WA-HAG-158
Hagerstown Historic District			Washington	WA-HAG-158	YES			Hagerstown	HAGERSTOWN	C18	WA-HAG-158
Otterbein UMC	145		Washington	WA-HAG-159	NO				HAGERSTOWN	C18	145 / WA-HAG-159
Potomac-Broadway Historic District			Washington	WA-HAG-159	NO			Hagerstown	HAGERSTOWN	C18	WA-HAG-159
WashingtonCo.Agricultural&MechanicalAssoc.Fairgrou			Washington	WA-HAG-184	NO		North Mulberry Street	Hagerstown	HAGERSTOWN	C18	WA-HAG-184
Andrew Hager Mill	148		Washington	WA-HAG-190	NO				HAGERSTOWN	C18	148 / WA-HAG-190
Andrew Hager Mill			Washington	WA-HAG-190	NO		Mill Street	Hagerstown	HAGERSTOWN	C18	WA-HAG-190
Western Maryland Railway Warehouse, Off. & Comm.			Washington	WA-HAG-199	YES		Eutaw Place	Hagerstown	HAGERSTOWN	C18	WA-HAG-199
Stickell & Sons Feed Manufacturing			Washington	WA-HAG-201	NO	67	West Baltimore Street	Hagerstown	HAGERSTOWN	C18	WA-HAG-201
Manbeck Bread Company (Reisner Products, Inc.)			Washington	WA-HAG-205	NO	358	West Church Street	Hagerstown	HAGERSTOWN	C18	WA-HAG-205
Hagerstown Spoke & Bending Co. (Maryland Metals, In			Washington	WA-HAG-206	NO	304	West Church Street	Hagerstown	HAGERSTOWN	C18	WA-HAG-206
Michel Company (National Biscuit Company Warehouse			Washington	WA-HAG-209	NO	36	West Lee Street	Hagerstown	HAGERSTOWN	C18	WA-HAG-209
Middlekauff House			Washington	WA-HAG-217	NO	837	Concord Street	Hagerstown	HAGERSTOWN	C18	WA-HAG-217
Donald E. Ardinger House			Washington	WA-I-001	NO	1740	West Washington Street (MD 144)	Hagerstown	MASON DIXON	C18	WA-I-001
Stucco House			Washington	WA-I-002	NO		West Washington Street (MD 144)	Hagerstown	MASON DIXON	C18	WA-I-002
Rock Spring Farm	134		Washington	WA-I-004	NO				MASON-DIXON	C18	134 / WA-I-004
J.R. Fridinger Farm			Washington	WA-I-004	NO		National Pike (US 40)	Hagerstown	MASON DIXON	C18	WA-I-004
E. Doub House			Washington	WA-I-006	NO		National Pike (US 40)	Hagerstown	MASON DIXON	C18	WA-I-006
Log House			Washington	WA-I-007	NO		National Pike (US 40)	Hagerstown	MASON DIXON	C18	WA-I-007
Oster House			Washington	WA-I-009	NO	1926	West Washington Street	Hagerstown	MASON DIXON	C18	WA-I-009
Brick and Log House			Washington	WA-I-010	NO		National Pike (US 40)	Hagerstown	MASON DIXON	C18	WA-I-010
Wingert Farm			Washington	WA-I-320	NO		East McDade Road	Hagerstown	MASON DIXON	C18	WA-I-320
Farmhouse			Washington	WA-I-321	NO		East McDade Road	Hagerstown	MASON DIXON	C18	WA-I-321
Burkholder Log and Frame House			Washington	WA-I-337	NO		National Pike (US 40)	Hagerstown	MASON DIXON	C18	WA-I-337
Baker Farm			Washington	WA-I-338	NO		West Washington Street (MD 144)	Hagerstown	HAGERSTOWN	C18	WA-I-338
Small Log and Frame House			Washington	WA-I-339	NO		West Washington Street (MD 144)	Hagerstown	MASON DIXON	C18	WA-I-339
Schindel-Custer Farm			Washington	WA-I-340	NO		West Washington Street (MD 144)	Hagerstown	MASON DIXON	C18	WA-I-340
Turn of the Century Farm Complex			Washington	WA-I-341	NO		West Washington Street (MD 144)	Hagerstown	MASON DIXON	C18	WA-I-341
Former Hopewell School			Washington	WA-I-355	NO		Hopewell Road	Hagerstown	MASON DIXON	C18	WA-I-355
Sided House with Exposed Chimney Back			Washington	WA-I-442	NO		Mount Aetna Road	Hagerstown	HAGERSTOWN	C18	WA-I-442
Small Brick Veneered House			Washington	WA-I-450	NO		Mount Aetna Road	Hagerstown	HAGERSTOWN	C18	WA-I-450
Bridge, U.S. 40 over Br. of Antietam Creek (SHA210			Washington	WA-I-730	YES		National Pike (US 40)	Hagerstown	WILLIAMSPORT	C18	WA-I-730
Pike Hall	135		Washington		YES				MASON-DIXON	C18	135
Stone House	133C		Washington		NO				MASON-DIXON	C18	133C
Early House	134A		Washington		NO				MASON-DIXON	C18	134A
Early House	134B		Washington		NO				MASON-DIXON	C18	134B
Early Houses	134C		Washington		NO				MASON-DIXON	C18	134C
Old Alignment	135A		Washington		YES				MASON-DIXON	C18	135A
Stage Coach Inn (Newcomer's Tavern Stand)			Washington	WA-I-011	YES		National Pike (US 40)	Hagerstown	MASON DIXON	C19	WA-I-011

Firey House			Washington	WA-I-012	NO		National Pike (US 40)	Hagerstown	MASON DIXON	C19	WA-I-012
Eby House			Washington	WA-I-328	NO		National Pike (US 40)	Hagerstown	MASON DIXON	C19	WA-I-328
Hege Farm			Washington	WA-I-335	NO		National Pike (US 40)	Hagerstown	MASON DIXON	C19	WA-I-335
Brick House			Washington	WA-I-367	NO		National Pike (US 40)	Hagerstown	MASON DIXON	C19	WA-I-367
Wilson's Bridge (Conococheague Bridge, Creek Bridg			Washington	WA-V-001	YES		Independance Road	Clear Spring	MASON DIXON	C19	WA-V-001
Log Cabin			Washington	WA-V-002	NO		Rockdale Road	Clear Spring	MASON DIXON	C19	WA-V-002
Wilson School			Washington	WA-V-007	NO		National Pike (US 40)	Clear Spring	MASON DIXON	C19	WA-V-007
Wilson Complex	128		Washington	WA-V-007, WA-V-074	YES				MASON-DIXON	C19	128 / WA-V-007, WA-V-074
Dennis Farm			Washington	WA-V-025	NO		National Pike (US 40)	Clear Spring	CLEAR SPRING	C19	WA-V-025
Dennis Farm			Washington	WA-V-026	NO		National Pike (US 40)	Clear Spring	CLEAR SPRING	C19	WA-V-026
Kershner-Summers-Groh House			Washington	WA-V-054	NO		National Pike (US 40)	Hagerstown	MASON DIXON	C19	WA-V-054
R.H. Wilson & Son Store	129	96001416	Washington	WA-V-074	YES			Clear Spring	MASON-DIXON	C19	129 / WA-V-074
Old Alignment	130		Washington	WA-V-074	YES				MASON-DIXON	C19	130 / WA-V-074
Rufus Wilson Complex	129	96001416	Washington	WA-V-074	YES			Clear Spring	MASON DIXON	C19	WA-V-074
Gateway Sea Food House			Washington	WA-V-075	NO		National Pike (US 40)	Hagerstown	MASON DIXON	C19	WA-V-075
Bloyer House			Washington	WA-V-098	YES		Spickler Road & National Pike (US 40)	Clear Spring	MASON DIXON	C19	WA-V-098
Carriage Factory			Washington	WA-V-099	NO		Spickler Road & National Pike (US 40)	Clear Spring	MASON DIXON	C19	WA-V-099
Halteman Farm			Washington	WA-V-115	NO		National Pike (US 40)	Clear Spring	CLEAR SPRING	C19	WA-V-115
Brick House			Washington	WA-V-192	NO		National Pike (US 40)	Clear Spring	MASON DIXON	C19	WA-V-192
Route 40 Bridge over Conococheague Creek			Washington	WA-V-211	YES		National Pike (US 40)	Clear Spring	MASON DIXON	C19	WA-V-211
U. Grove House			Washington	WA-V-229	NO		National Pike (US 40)	Hagerstown	MASON DIXON	C19	WA-V-229
Haner House			Washington	WA-V-230	NO		National Pike (US 40)	Hagerstown	MASON DIXON	C19	WA-V-230
			Washington	WA-V-231	NO		National Pike (US 40)	Hagerstown	MASON DIXON	C19	WA-V-231
Keller Farm			Washington	WA-V-232	NO		National Pike (US 40)	Hagerstown	MASON DIXON	C19	WA-V-232
D. Haner Farmstead			Washington	WA-V-264	NO		National Pike (US 40)	Hagerstown	MASON DIXON	C19	WA-V-264
Old National Pike Milestone #76			Washington	WA-V-265	YES		National Pike (US 40)	Hagerstown	MASON DIXON	C19	WA-V-265
Old National Pike Milestone #77			Washington	WA-V-266	YES		National Pike (US 40)	Hagerstown	MASON DIXON	C19	WA-V-266
Old National Pike Milestone #78			Washington	WA-V-267	YES		National Pike (US 40)	Clear Spring	MASON DIXON	C19	WA-V-267
Shamrock Inn	132		Washington		YES				MASON-DIXON	C19	132
Bank Road Marker	127		Washington		YES				MASON-DIXON	C19	127
Charolais Farm	126		Washington		NO				MASON-DIXON	C19	126
Early Farmstead	125		Washington		NO				CLEAR SPRING	C19	125
Emmanuel Baptist Temple	133		Washington		NO				MASON-DIXON	C19	133
Wilson Bridge	131	82002822	Washington		YES				MASON-DIXON	C19	131
Brick House	125A		Washington		NO				CLEAR SPRING	C19	125A
Early Farmstead	126A		Washington		NO				MASON-DIXON	C19	126A
Early Manor House	133A		Washington		NO				MASON-DIXON	C19	133A
Brick House	133B		Washington		NO				MASON-DIXON	C19	133B
East Stafford			Washington	WA-V-009	NO		National Pike (US 40) & Cohill Road	Clear Spring	CLEAR SPRING	C20	WA-V-009
Otho Nesbitt Farm			Washington	WA-V-013	NO		Broadfording Road	Clear Spring	CLEAR SPRING	C20	WA-V-013
St. Paul's Manor (Probably Part of Well Pleased)			Washington	WA-V-028	NO		St. Paul's Church Road	Clear Spring	CLEAR SPRING	C20	WA-V-028
Tenant House on East Stafford Property			Washington	WA-V-039	NO		National Pike (US 40)	Clear Spring	CLEAR SPRING	C20	WA-V-039
Kretzer Farm			Washington	WA-V-119	NO		National Pike (US 40)	Clear Spring	CLEAR SPRING	C20	WA-V-119
Tourist Cabins	113		Washington	WA-V-131	YES		National Pike (US 40)	Clear Spring	CLEAR SPRING	C20	113 / WA-V-131
Motel Cabins	113		Washington	WA-V-131	YES		National Pike (US 40)	Clear Spring	CLEAR SPRING	C20	WA-V-131
Ore Banks			Washington	WA-V-132	NO		Ore Banks Road	Clear Spring	CLEAR SPRING	C20	WA-V-132
Stafford Hall Log House			Washington	WA-V-141	NO		Cohill Road	Clear Spring	CLEAR SPRING	C20	WA-V-141
Shady Bower			Washington	WA-V-142	YES		National Pike (US 40)	Clear Spring	CLEAR SPRING	C20	WA-V-142
St. Paul's Episcopal Church	124		Washington	WA-V-155	NO				CLEAR SPRING	C20	124 / WA-V-155
St. Paul's Church			Washington	WA-V-155	NO		National Pike (US 40)	Clear Spring	CLEAR SPRING	C20	WA-V-155
Sided Log House			Washington	WA-V-156	NO		National Pike (US 40)	Clear Spring	CLEAR SPRING	C20	WA-V-156
Corwell Farm	115		Washington	WA-V-164	NO				CLEAR SPRING	C20	115 / WA-V-164
Corwell Farm			Washington	WA-V-164	NO		National Pike (US 40)	Clear Spring	CLEAR SPRING	C20	WA-V-164
Log House			Washington	WA-V-165	NO		National Pike (US 40)	Clear Spring	CLEAR SPRING	C20	WA-V-165
Mid-19th C. Stone House	112		Washington	WA-V-166	YES		National Pike (US 40)	Clear Spring	CLEAR SPRING	C20	112 / WA-V-166
Mid 19th Century Stone House	112		Washington	WA-V-166	YES		National Pike (US 40)	Clear Spring	CLEAR SPRING	C20	WA-V-166
Old National Pike Milestone #80			Washington	WA-V-268	YES		National Pike (US 40)	Clear Spring	CLEAR SPRING	C20	WA-V-268
Old National Pike Milestone #81			Washington	WA-V-269	YES		National Pike (US 40)	Clear Spring	CLEAR SPRING	C20	WA-V-269
Old National Pike Milestone #83			Washington	WA-V-270	YES		National Pike (US 40)	Clear Spring	CLEAR SPRING	C20	WA-V-270
			Washington	WA-V-411	NO	12610			CLEAR SPRING	C20	WA-V-411
Garage	117		Washington	WA-V-414	YES		Cumberland Street (US 40)	Clear Spring	CLEAR SPRING	C20	117 / WA-V-414
The Clear Spring	118		Washington	WA-V-414	YES				CLEAR SPRING	C20	118 / WA-V-414
Town of Clear Spring			Washington	WA-V-414	YES			Clear Spring	CLEAR SPRING	C20	WA-V-414
Early House	123		Washington		NO				CLEAR SPRING	C20	123
Brick Farmhouse	122		Washington		NO				CLEAR SPRING	C20	122
Rose Hill Cemetery	120		Washington		NO				CLEAR SPRING	C20	120
Early Home	116		Washington		NO				CLEAR SPRING	C20	116
Federal Signal Station Marker	114		Washington		YES				CLEAR SPRING	C20	114

Kretzer Farm	121	Washington		NO				CLEAR SPRING	C20	121
Frame Farmhouse	119	Washington		NO				CLEAR SPRING	C20	119
Frame House	123A	Washington		NO				CLEAR SPRING	C20	123A
Stone House	123B	Washington		NO				CLEAR SPRING	C20	123B
Brick House	123C	Washington		NO				CLEAR SPRING	C20	123C
Park Head UMC	103	Washington	WA-V-046	NO				CHERRY RUN	C21	103 / WA-V-046
Park Head Church		Washington	WA-V-046	NO		National Pike (US 40)	Big Pool	CHERRY RUN	C21	WA-V-046
Indian Springs Hotel		Washington	WA-V-047	YES		National Pike (US 40)	Big Pool	CHERRY RUN	C21	WA-V-047
18th Century Stone Cabin		Washington	WA-V-052	YES		Licking Creek Road	Big Pool	CHERRY RUN	C21	WA-V-052
Aluminum Sided Log House		Washington	WA-V-171	NO		National Pike (US 40)	Clear Spring	CLEAR SPRING	C21	WA-V-171
St. Clements Chapel		Washington	WA-V-188	NO		Indian Springs Road	Big Pool	CLEAR SPRING	C21	WA-V-188
W. Gehr Farm		Washington	WA-V-233	NO		National Pike (US 40)	Clear Spring	CLEAR SPRING	C21	WA-V-233
		Washington	WA-V-238	NO		National Pike (US 40)	Big Pool	CHERRY RUN	C21	WA-V-238
Fort Frederick Marker	109	Washington	WA-V-239	YES				CHERRY RUN	C21	109 / WA-V-239
Indian Springs		Washington	WA-V-239	NO		National Pike (US 40)	Big Pool	CHERRY RUN	C21	WA-V-239
		Washington	WA-V-240	NO		National Pike (US 40)	Clear Spring	CLEAR SPRING	C21	WA-V-240
Licking Creek Bridge	104	Washington	WA-V-416	YES		National Pike (US 40)	Big Pool	CHERRY RUN	C21	104 / WA-V-416
Bridge, US 40 over Licking Creek (SHA #21010)		Washington	WA-V-416	YES		National Pike (US 40)	Big Pool	CHERRY RUN	C21	WA-V-416
W. Gehr Farmstead	111	Washington		NO				CHERRY RUN	C21	111
Frame House	107	Washington		NO				CHERRY RUN	C21	107
Former Gas Station	101	Washington		YES				CHERRY RUN	C21	101
Fort Mills Marker	105	Washington		YES				CHERRY RUN	C21	105
Frame House	102	Washington		NO				CHERRY RUN	C21	102
Breeden's Store	108	Washington		YES				CHERRY RUN	C21	108
Old Alignment	103A	Washington		YES				CHERRY RUN	C21	103A
Stone House	103B	Washington		NO				CHERRY RUN	C21	103B
Garage	103C	Washington		YES				CHERRY RUN	C21	103C
Frame House	107A	Washington		NO		NO		CHERRY RUN	C21	107A
Frame House	111A	Washington		NO				CLEAR SPRING	C21	111A
Chesapeake & Ohio Canal National Historical Park		Washington	WA-VI-048	YES				HF/KEE/SHEP/WIL/HED/B	C21, C22	WA-VI-048
Stuccoed Farmhouse		Washington	WA-VI-012	NO		Lashley Road	Hancock	HANCOCK	C22	WA-VI-012
Old National Pike Milestone #93		Washington	WA-VI-041	YES		Timber Ridge Road No. 2 (MD 615)	Hancock	CHERRY RUN	C22	WA-VI-041
Old National Pike Milestone #94		Washington	WA-VI-042	YES		Dwight D. Eisenhower Hwy. (I-70, US 40)	Hancock	CHERRY RUN	C22	WA-VI-042
Old National Pike Milestone #95		Washington	WA-VI-043	YES		Dwight D. Eisenhower Hwy. (I-70, US 40)	Hancock	HANCOCK	C22	WA-VI-043
Smith's Repair Shop	99	Washington		YES				CHERRY RUN	C22	99
Log Cabin Inn	98	Washington		YES				CHERRY RUN	C22	98
Roland's Garage and Used Cars	97	Washington		YES				HANCOCK	C22	97
Old Alginment	96	Washington		YES				HANCOCK	C22	96
Old Alignment	100	Washington		YES				CHERRY RUN	C22	100
Oliver House	90	Washington	WA-VI-002	NO				HANCOCK	C23	090 / WA-VI-002
Oliver House		Washington	WA-VI-002	NO		Western Pike (MD 144)	Hancock	HANCOCK	C23	WA-VI-002
Stiger's Farm		Washington	WA-VI-005	NO		Warfordsburg Road	Hancock	HANCOCK	C23	WA-VI-005
Old Mr. Flint's Home	92	Washington	WA-VI-006	YES	5102	Western Pike (MD 144)	Hancock	HANCOCK	C23	092 / WA-VI-006
Old Mr. Flint's Place	92	Washington	WA-VI-006	YES	5102	Western Pike (MD 144)	Hancock	HANCOCK	C23	WA-VI-006
Toll House	93	Washington	WA-VI-007	YES		Western Pike (MD 144)	Hancock	HANCOCK	C23	093 / WA-VI-007
Tollhouse	93	Washington	WA-VI-007	YES		Western Pike (MD 144)	Hancock	HANCOCK	C23	WA-VI-007
Sunshine Hill		Washington	WA-VI-013	NO		Western Pike (MD 144)	Hancock	HANCOCK	C23	WA-VI-013
Hancock Survey District		Washington	WA-VI-040	YES			Hancock	HANCOCK	C23	WA-VI-040
Old National Pike Milestone #98		Washington	WA-VI-044	YES		Main Street (MD 144)	Hancock	HANCOCK	C23	WA-VI-044
Old National Pike Milestone #102		Washington	WA-VI-045	YES		National Pike (US 40)	Hancock	BELLEGROVE	C23	WA-VI-045
Chesapeake & Ohio Canal National Historical Park		Washington	WA-VI-048	YES				HF/KEE/SHEP/WIL/HED/B	C23	WA-VI-048
Chesapeake & Ohio Canal National Historical Park		Washington	WA-VI-048	YES				HF/KEE/SHEP/WIL/HED/B	C23	WA-VI-048
Commercial Bldg	95	Washington		NO				HANCOCK	C23	95
Barnard's Ice Cream Parlor	94	Washington		NO				HANCOCK	C23	94
Tonoloway Fort Marker	91	Washington		YES				HANCOCK	C23	91
J.C. Smith Buildings (3 Buildings)		Allegany	AL-I-B-003	YES		National Pike (US 40)	Bellegrove	BELLEGROVE	C24	AL-I-B-003
Bellegrove Weatherboard House		Allegany	AL-I-B-024	NO		National Pike (US 40)	Bellegrove	BELLEGROVE	C24	AL-I-B-024
Hoopengardner Frame House		Allegany	AL-I-B-028	NO		Earth Road	Bellegrove	BELLEGROVE	C24	AL-I-B-028
Harvey House	88	Washington	WA-VI-001	YES		Exline Road	Hancock	BELLEGROVE	C24	088 / WA-VI-001
Harvey House	88	Washington	WA-VI-001	YES		Exline Road	Hancock	BELLEGROVE	C24	WA-VI-001
Old National Pike Milestone #104		Washington	WA-VI-046	YES		National Pike (US 40)	Hancock	BELLEGROVE	C24	WA-VI-046
Former Hotel	87	Washington		YES				BELLEGROVE	C24	87
Sideling Creek Bridge	86	Washington		YES				BELLEGROVE	C24	86
Sideling Hill Overlook	087A	Washington		YES				BELLEGROVE	C24	087A
Old Alignment	89	Washington		YES				BELLEGROVE	C24	89
19th-century House and Service Building		Allegany	AL-I-A-001	NO		National Pike (US 40)	Piney Grove	ARTEMAS	C25	AL-I-A-001
Town Hill Hotel	84	Allegany	AL-I-A-002	YES		National Pike (US 40)	Piney Grove	ARTEMAS	C25	084 / AL-I-A-002
Town Hill Hotel	84	Allegany	AL-I-A-002	YES		National Pike (US 40)	Piney Grove	ARTEMAS	C25	AL-I-A-002

Golden Frame House			Allegany	AL-I-A-044	NO		National Pike (US 40)	Piney Grove	ARTEMAS	C25	AL-I-A-044
Doc Watson's Garage			Allegany	AL-I-B-035	NO		National Pike (US 40)	Piney Plains	BELLESGROVE	C25	AL-I-B-035
Creek Frame House			Allegany	AL-I-B-036	NO		Golden Road	Piney Plains	BELLESGROVE	C25	AL-I-B-036
Brinkman Frame House (Trail Frame House)			Allegany	AL-I-B-039	NO		National Pike (US 40)	Piney Plains	BELLESGROVE	C25	AL-I-B-039
Hartley Log House			Allegany	AL-I-B-040	NO		Watson Road	Piney Plains	BELLESGROVE	C25	AL-I-B-040
Old National Pike Milestone No. 110			Allegany	AL-I-B-077	YES		National Pike (US 40)	Piney Plains	BELLESGROVE	C25	AL-I-B-077
Bridge, US 40 over trib. of Sideling Hill Cr.(A-10)			Allegany	AL-I-B-082	NO		National Pike (US 40)	Piney Plains	BELLESGROVE	C25	AL-I-B-082
Piney Grove Hotel	85		Allegany		YES				BELLESGROVE	C25	85
Town Hill Overlook	084A		Allegany		YES				ARTEMAS	C25	084A
Board and Batten House			Allegany	AL-I-A-014	NO		National Pike (US 40)	Pratt	ARTEMAS	C26	AL-I-A-014
Large White Frame House			Allegany	AL-I-A-015	NO		National Pike (US 40)	Pratt	ARTEMAS	C26	AL-I-A-015
White Frame House			Allegany	AL-I-A-016	NO		National Pike (US 40)	Pratt	ARTEMAS	C26	AL-I-A-016
Shipway's Restaurant and Garage			Allegany	AL-I-A-050	YES		National Pike (US 40)	Pratt	ARTEMAS	C26	AL-I-A-050
Boy's Forestry Camp Supervisor's Residence			Allegany	AL-I-A-055	NO		Fifteen Mile Creek Road	Pratt	ARTEMAS	C26	AL-I-A-055
Superintendent's Residence, Green Ridge State Fore			Allegany	AL-I-A-059	NO		National Pike (US 40)	Pratt	ARTEMAS	C26	AL-I-A-059
15 Mile Creek Bridge	83		Allegany	AL-I-A-083	YES		National Pike (US 40)	Pratt	ARTEMAS	C26	083 / AL-I-A-083
Bridge, US 40 over Scenic 15-Mile Creek (SHA #1036)	83		Allegany	AL-I-A-083	YES		National Pike (US 40)	Pratt	ARTEMAS	C26	AL-I-A-083
Double House			Allegany	AL-I-A-012	NO		National Pike (US 40)	Pratt	ARTEMAS	C27	AL-I-A-012
Hobart Walinger House			Allegany	AL-I-A-013	NO		National Pike (US 40)	Pratt	ARTEMAS	C27	AL-I-A-013
Flintstone Hotel (Piper Hotel)			Allegany	AL-II-A-001	YES		Main Street (MD 144)	Flintstone	FLINTSTONE	C27	AL-II-A-001
Roland Frame House			Allegany	AL-II-A-038	NO		Main Street (MD 144)	Flintstone	FLINTSTONE	C27	AL-II-A-038
Park Frame House (Bender Frame House)			Allegany	AL-II-A-039	NO		Main Street (MD 144)	Flintstone	FLINTSTONE	C27	AL-II-A-039
Bender Frame House			Allegany	AL-II-A-040	NO		Main Street (MD 144)	Flintstone	FLINTSTONE	C27	AL-II-A-040
Wigfield Blacksmith Shop			Allegany	AL-II-A-041	YES		Main Street (MD 144)	Flintstone	FLINTSTONE	C27	AL-II-A-041
Moser Frame House			Allegany	AL-II-A-042	NO		Main Street (MD 144)	Flintstone	FLINTSTONE	C27	AL-II-A-042
Flintstone Bridge over old Rt.40(40 over F-stone C			Allegany	AL-II-A-043	YES		Main Street (MD 144)	Flintstone	FLINTSTONE	C27	AL-II-A-043
Helmick's Grocery Store			Allegany	AL-II-A-044	YES		Main Street & Williams Road	Flintstone	FLINTSTONE	C27	AL-II-A-044
Helmick Frame House			Allegany	AL-II-A-045	NO		Main Street & Williams Road	Flintstone	FLINTSTONE	C27	AL-II-A-045
Old High School (Kinton House)			Allegany	AL-II-A-046	NO		Main Street (MD 144)	Flintstone	FLINTSTONE	C27	AL-II-A-046
Gas Station			Allegany	AL-II-A-047	YES		Main Street (MD 144)	Flintstone	FLINTSTONE	C27	AL-II-A-047
McCollister House			Allegany	AL-II-A-048	NO		Main Street & Williams Road	Flintstone	FLINTSTONE	C27	AL-II-A-048
Methodist Parsonage			Allegany	AL-II-A-049	NO		Main Street (MD 144)	Flintstone	FLINTSTONE	C27	AL-II-A-049
Twigg Saltbox			Allegany	AL-II-A-050	NO		Main Street (MD 144)	Flintstone	FLINTSTONE	C27	AL-II-A-050
Rice Stucco House			Allegany	AL-II-A-051	NO		Main Street (MD 144)	Flintstone	FLINTSTONE	C27	AL-II-A-051
Roland Log House			Allegany	AL-II-A-052	NO		Main Street (MD 144)	Flintstone	FLINTSTONE	C27	AL-II-A-052
Mitchell Frame House			Allegany	AL-II-A-053	NO		Main Street (MD 144)	Flintstone	FLINTSTONE	C27	AL-II-A-053
Old Post Office and General Store			Allegany	AL-II-A-054	NO		Main Street (MD 144)	Flintstone	FLINTSTONE	C27	AL-II-A-054
Kyle Brick House (Kyle House)			Allegany	AL-II-A-055	YES		Main Street (MD 144)	Flintstone	FLINTSTONE	C27	AL-II-A-055
Flintstone Fire Hall			Allegany	AL-II-A-056	NO		Main Street (MD 144)	Flintstone	FLINTSTONE	C27	AL-II-A-056
Mauzy Frame House			Allegany	AL-II-A-057	YES		Williams Road	Flintstone	FLINTSTONE	C27	AL-II-A-057
Hamon's Brick (Insul) House			Allegany	AL-II-A-058	NO		Williams Road	Flintstone	FLINTSTONE	C27	AL-II-A-058
Lawrence C. Smith House			Allegany	AL-II-A-059	NO		Old National Pike (MD 144)	Gilpin	FLINTSTONE	C27	AL-II-A-059
Elijah Robosson Log House			Allegany	AL-II-A-060	NO		National Pike (US 40)	Flintstone	FLINTSTONE	C27	AL-II-A-060
Ricker Frame House			Allegany	AL-II-A-067	NO		National Pike (US 40)	Gilpin	FLINTSTONE	C27	AL-II-A-067
Town Creek Road Bridge			Allegany	AL-II-A-101	YES		Town Creek Road	Gilpin	FLINTSTONE	C27	AL-II-A-101
Farmhouse			Allegany	AL-II-A-105	NO		Old National Pike (MD 144)	Gilpin	FLINTSTONE	C27	AL-II-A-105
Tannery Manager's House			Allegany	AL-II-A-106	NO		National Pike (US 40)	Gilpin	FLINTSTONE	C27	AL-II-A-106
Flintstone Hotel	81	76000976	Allegany	AL-II-A-109	YES				FLINTSTONE	C27	081 / AL-II-A-109
Flintstone Historic District			Allegany	AL-II-A-109	YES			Flintstone	FLINTSTONE	C27	AL-II-A-109
Montgomery Farm			Allegany	AL-II-A-115	NO		National Pike (US 40)	Gilpin	FLINTSTONE	C27	AL-II-A-115
Bridge, MD 144 over Town Creek (SHA #1035)			Allegany	AL-II-A-149	YES		Old Natl. Pike (MD 144)	Gilpin	FLINTSTONE	C27	AL-II-A-149
Warrior's Path Marker	80		Allegany		YES				FLINTSTONE	C27	80
Frame Commerical Bldgs	82		Allegany		NO				FLINTSTONE	C27	82
Breakneck Road (Breakneck Valley) Historic Distric			Allegany	AL-II-A-140	NO			Flintstone	FLINTSTONE/EVITTS CRK	C27, C28	AL-II-A-140
Early Inn	079A	76000976	Allegany	AL-II-A-006	YES		MD 144 & West Wilson Rd.	Pleasant Valley	FLINTSTONE	C28	079A / AL-II-A-006
Stone House (or) Tavern	079A	76000976	Allegany	AL-II-A-006	YES		MD 144 & West Wilson Rd.	Pleasant Valley	FLINTSTONE	C28	AL-II-A-006
Fairview Cemetery			Allegany	AL-II-A-095	NO		West Wilson Road	Pleasant Valley	FLINTSTONE	C28	AL-II-A-095
Old National Pike Milestone No. 125			Allegany	AL-II-A-098	YES		National Pike (US 40)	Flintstone	FLINTSTONE	C28	AL-II-A-098
National Pike			Allegany	AL-II-A-110	YES		Old National Pike (MD 144)	Pleasant Valley	FLINTSTONE	C28	AL-II-A-110
Hartsock Brick Farm House			Allegany	AL-II-A-125	NO		Hardsock Road	Pleasant Valley	FLINTSTONE	C28	AL-II-A-125
Old Bucy House			Allegany	AL-III-C-063	NO		National Pike (US 40)	Wolfe Mill	EVITTS CREEK	C28	AL-III-C-063
House			Allegany	AL-III-C-064	NO		National Pike (US 40)	Yonkers	EVITTS CREEK	C28	AL-III-C-064
House			Allegany	AL-III-C-065	NO		National Pike (US 40)	Yonkers	EVITTS CREEK	C28	AL-III-C-065
Farmhouse			Allegany	AL-III-C-066	NO		National Pike (US 40)	Yonkers	EVITTS CREEK	C28	AL-III-C-066
Cloverhill Farm (McLuckie Farm, part of Rocky Gap			Allegany	AL-III-C-068	NO		National Pike (US 40)	Yonkers	EVITTS CREEK	C28	AL-III-C-068
Stone & Half-Timbered House			Allegany	AL-III-C-069	NO		Pleasant Valley Road	Yonkers	EVITTS CREEK	C28	AL-III-C-069
Old Wolford House			Allegany	AL-III-C-070	NO		National Pike (US 40)	Yonkers	EVITTS CREEK	C28	AL-III-C-070
Pleasant Valley School House			Allegany	AL-III-C-142	NO		Pleasant Valley Road	Yonkers	EVITTS CREEK	C28	AL-III-C-142

Clover Hill Barn (at Rocky Gap State Park)			Allegany	AL-III-C-169	NO		National Pike (US 40)	Yonkers	EVITTS CREEK	C28	AL-III-C-169
Old Alignment	79		Allegany		YES				FLINTSTONE	C28	79
Early House or Inn	75	76000976	Allegany	AL-III-C-004	YES		National Pike (US 40)	Pleasant Grove	EVITTS CREEK	C29	075 / AL-III-C-004
Early Frame House	75	76000976	Allegany	AL-III-C-004	YES		National Pike (US 40)	Pleasant Grove	EVITTS CREEK	C29	AL-III-C-004
Colonial Manor (Turkey Flight Manor)			Allegany	AL-III-C-007	YES		Ali Ghan Road (US 40)	Wolfe Mill	EVITTS CREEK	C29	AL-III-C-007
Six Mile House/Plummer's Inn	77	76000976	Allegany	AL-III-C-008	YES		National Pike (US 40)	Wolfe Mill	EVITTS CREEK	C29	077 / AL-III-C-008
Six Mile House	77	76000976	Allegany	AL-III-C-008	YES		National Pike (US 40)	Wolfe Mill	EVITTS CREEK	C29	AL-III-C-008
Hess Brick House			Allegany	AL-III-C-031	NO		Hillcrest Drive (MD 952)	Wolfe Mill	EVITTS CREEK	C29	AL-III-C-031
Grabenstein Farm House			Allegany	AL-III-C-033	NO		Jeffries Road	Pleasant Grove	EVITTS CREEK	C29	AL-III-C-033
Folck's Mill			Allegany	AL-III-C-040	NO		National Pike (US 40)	Wolfe Mill	EVITTS CREEK	C29	AL-III-C-040
The Aerie Signpost			Allegany	AL-III-C-052	NO		Old National Pike (MD 952)	Wolfe Mill	EVITTS CREEK	C29	AL-III-C-052
Barn & Smokehouse on Christie Road			Allegany	AL-III-C-053	NO		Christie Road	Wolfe Mill	EVITTS CREEK	C29	AL-III-C-053
Concrete Block House			Allegany	AL-III-C-054	NO		Ali Ghan Road (US 40)	Wolfe Mill	EVITTS CREEK	C29	AL-III-C-054
Bower Garden Center			Allegany	AL-III-C-055	NO		Christie Road	Wolfe Mill	EVITTS CREEK	C29	AL-III-C-055
Carleton Farm			Allegany	AL-III-C-056	NO		Ali Ghan Road (US 40)	Wolfe Mill	EVITTS CREEK	C29	AL-III-C-056
Three Bay Farmhouse			Allegany	AL-III-C-057	NO		Grabenstein Road	Pleasant Grove	EVITTS CREEK	C29	AL-III-C-057
Two Story Stone & Frame House			Allegany	AL-III-C-058	NO		National Pike (US 40)	Pleasant Grove	EVITTS CREEK	C29	AL-III-C-058
White Frame House With Red Metal Roof			Allegany	AL-III-C-059	NO		National Pike (US 40)	Pleasant Grove	EVITTS CREEK	C29	AL-III-C-059
Beall Log House			Allegany	AL-III-C-061	NO		National Pike (US 40)	Pleasant Grove	EVITTS CREEK	C29	AL-III-C-061
Pleasant Grove Church	76		Allegany	AL-III-C-062	NO				EVITTS CREEK	C29	076 / AL-III-C-062
Pleasant Grove Church & Cemetery			Allegany	AL-III-C-062	NO		National Pike (US 40)	Pleasant Grove	EVITTS CREEK	C29	AL-III-C-062
Miller Brothers Garage	78		Allegany	AL-III-C-067	YES		National Pike (US 40)	Yonkers	EVITTS CREEK	C29	078 / AL-III-C-067
Exxon Station/Miller Brothers Garage	78		Allegany	AL-III-C-067	YES		National Pike (US 40)	Yonkers	EVITTS CREEK	C29	AL-III-C-067
Hendrickson House			Allegany	AL-III-C-083	NO		National Pike (US 40)	Pleasant Grove	EVITTS CREEK	C29	AL-III-C-083
Hillcrest Cemetery			Allegany	AL-III-C-110	NO		Hillcrest Road	Wolfe Mill	EVITTS CREEK	C29	AL-III-C-110
Bridge I-68 over Evitts Creek (SHA # 1030)			Allegany	AL-III-C-164	NO		I-68	Wolfe Mill	EVITTS CREEK	C29	AL-III-C-164
Sumner Cemetery			Allegany	AL-IV-A-125	NO		Yale Street	Cumberland	CUMBERLAND	C29	AL-IV-A-125
Francis Haley House			Allegany	AL-IV-A-128	NO	634	Maryland Avenue	Cumberland	CUMBERLAND	C29	AL-IV-A-128
Rolling Mill (Maryland Avenue) (Keller Survey)			Allegany	AL-IV-A-140	NO		Maryland Avenue	Cumberland	CUMBERLAND	C29	AL-IV-A-140
Decatur Street (Baltimore Avenue) (Keller Survey)			Allegany	AL-IV-A-141	NO		Baltimore Avenue	Cumberland	CUMBERLAND	C29	AL-IV-A-141
Foulk's Mill	74		Allegany		NO				EVITTS CREEK	C29	74
Cumberland Motel	72		Allegany		YES				EVITTS CREEK	C29	72
Lippold House	71		Allegany		NO				EVITTS CREEK	C29	71
Colonial Manor	73	76000976	Allegany		NO				EVITTS CREEK	C29	73
Stone Mansion	074A		Allegany		NO				EVITTS CREEK	C29	074A
Sixteen Altamont Terrace			Allegany	AL-IV-A-003	NO	16	Altamont Terrace	Cumberland	CUMBERLAND	C30	AL-IV-A-003
George Truog House (Leisure-Stein Funeral Home)			Allegany	AL-IV-A-004	NO	230	Baltimore Avenue	Cumberland	CUMBERLAND	C30	AL-IV-A-004
Row Houses			Allegany	AL-IV-A-005	NO	103-111	Decatur Street	Cumberland	CUMBERLAND	C30	AL-IV-A-005
Row Houses			Allegany	AL-IV-A-006	NO	200-208	Decatur Street	Cumberland	CUMBERLAND	C30	AL-IV-A-006
House			Allegany	AL-IV-A-007	NO	212	Decatur Street	Cumberland	CUMBERLAND	C30	AL-IV-A-007
Deneen-Davidson House			Allegany	AL-IV-A-008	NO	301	Decatur Street	Cumberland	CUMBERLAND	C30	AL-IV-A-008
Wright Butler House			Allegany	AL-IV-A-009	NO	205	Columbia Street	Cumberland	CUMBERLAND	C30	AL-IV-A-009
Greek Revival House			Allegany	AL-IV-A-010	NO	400	Decatur Street	Cumberland	CUMBERLAND	C30	AL-IV-A-010
Italianate Brick House			Allegany	AL-IV-A-019	NO	126-128	Columbia Street	Cumberland	CUMBERLAND	C30	AL-IV-A-019
Washington Street Historic District			Allegany	AL-IV-A-026	YES		Washington Street	Cumberland	CUMBERLAND	C30	AL-IV-A-026
Cumberland Railroad Station	64	73000885	Allegany	AL-IV-A-027	YES		Baltimore and Canal Streets	Cumberland	CUMBERLAND	C30	064 / AL-IV-A-027
Western Maryland Railway Station	64	73000885	Allegany	AL-IV-A-027	YES		Baltimore and Canal Streets	Cumberland	CUMBERLAND	C30	AL-IV-A-027
Wolf Furniture Company Building			Allegany	AL-IV-A-033	NO	42-46	Baltimore Street	Cumberland	CUMBERLAND	C30	AL-IV-A-033
Metal Front Building (Wolf Furniture Company)			Allegany	AL-IV-A-034	NO	38-40	Baltimore Street	Cumberland	CUMBERLAND	C30	AL-IV-A-034
A Touch of Home Arts and Crafts Building			Allegany	AL-IV-A-035	NO	36	North Mechanic Street	Cumberland	CUMBERLAND	C30	AL-IV-A-035
Chicken Jubilee Building			Allegany	AL-IV-A-036	NO	66-72	North Mechanic Street	Cumberland	CUMBERLAND	C30	AL-IV-A-036
Mid 19th Century Building (Davis Shoe Repair Bldg.			Allegany	AL-IV-A-038	NO	69-71	North Centre Street	Cumberland	CUMBERLAND	C30	AL-IV-A-038
Bedford			Allegany	AL-IV-A-039	NO	112	Bedford Street	Cumberland	CUMBERLAND	C30	AL-IV-A-039
Queen Anne Style House			Allegany	AL-IV-A-040	NO	132	Bedford Street	Cumberland	CUMBERLAND	C30	AL-IV-A-040
Late 19th Century House			Allegany	AL-IV-A-041	NO	115	Bedford Street	Cumberland	CUMBERLAND	C30	AL-IV-A-041
Mid 19th Century House			Allegany	AL-IV-A-042	NO	119	Bedford Street	Cumberland	CUMBERLAND	C30	AL-IV-A-042
Late 19th Century Building			Allegany	AL-IV-A-043	NO	121	Bedford Street	Cumberland	CUMBERLAND	C30	AL-IV-A-043
George Washington's Headquarters, Riverside Park			Allegany	AL-IV-A-047	YES		Green Street	Cumberland	CUMBERLAND	C30	AL-IV-A-047
C & O Canal National Park: Western Terminus			Allegany	AL-IV-A-048	YES			Cumberland	CUMBERLAND	C30	AL-IV-A-048
Mid 19th Century House			Allegany	AL-IV-A-072	NO	116	Greene Street	Cumberland	CUMBERLAND	C30	AL-IV-A-072
Mid 19th Century Double House			Allegany	AL-IV-A-073	NO	110-112	Greene Street	Cumberland	CUMBERLAND	C30	AL-IV-A-073
Mid 19th Century House			Allegany	AL-IV-A-074	NO	71	Greene Street	Cumberland	CUMBERLAND	C30	AL-IV-A-074
Mid 19th Century House			Allegany	AL-IV-A-075	NO	69	Greene Street	Cumberland	CUMBERLAND	C30	AL-IV-A-075
Rose Hill, site (Oldest Brick House in Cumberland)			Allegany	AL-IV-A-084	NO		Avirett Place	Cumberland	CUMBERLAND	C30	AL-IV-A-084
Blue Spring			Allegany	AL-IV-A-091	NO			Cumberland	CUMBERLAND	C30	AL-IV-A-091
George Dent House, site			Allegany	AL-IV-A-101	NO	118	Greene Street	Cumberland	CUMBERLAND	C30	AL-IV-A-101
Town Clock Church (First Christian Ch., Disciples o			Allegany	AL-IV-A-102	NO	312	Bedford Street	Cumberland	CUMBERLAND	C30	AL-IV-A-102
Public Market House, site			Allegany	AL-IV-A-103	YES		Mechanic & Market Streets	Cumberland	CUMBERLAND	C30	AL-IV-A-103

Dr. James P. Smith House, site			Allegany	AL-IV-A-104	NO	425	Paca Street (Chase Street?)	Cumberland	CUMBERLAND	C30	AL-IV-A-104
James Scott Tavern and Mill, site			Allegany	AL-IV-A-105	YES		Mechanic at Bedford Street	Cumberland	CUMBERLAND	C30	AL-IV-A-105
Captain Robert Armistead French House			Allegany	AL-IV-A-107	NO		Williams Street at Park Street	Cumberland	CUMBERLAND	C30	AL-IV-A-107
St. Patrick's Catholic Church			Allegany	AL-IV-A-108	NO	201	North Centre Street	Cumberland	CUMBERLAND	C30	AL-IV-A-108
Trinity Evangelical Lutheran Church			Allegany	AL-IV-A-109	NO	328	North Centre Street	Cumberland	CUMBERLAND	C30	AL-IV-A-109
Canada Hose Company (Cumberland Hose Company No. 1			Allegany	AL-IV-A-111	NO	400-402	North Mechanic Street	Cumberland	CUMBERLAND	C30	AL-IV-A-111
Kingley (United) Methodist Church			Allegany	AL-IV-A-112	NO	248	Williams Street	Cumberland	CUMBERLAND	C30	AL-IV-A-112
First Baptist Church			Allegany	AL-IV-A-113	NO	212	Bedford Street	Cumberland	CUMBERLAND	C30	AL-IV-A-113
Centre Street U.M. Church			Allegany	AL-IV-A-115	NO	217	North Centre Street	Cumberland	CUMBERLAND	C30	AL-IV-A-115
St. Peter and Paul Catholic Church (Ursuline Acade			Allegany	AL-IV-A-117	NO	125	Fayette Street	Cumberland	CUMBERLAND	C30	AL-IV-A-117
Canada Hose Company (Vigilant Hose Company No. 3)			Allegany	AL-IV-A-118	NO		Mechanic Street	Cumberland	CUMBERLAND	C30	AL-IV-A-118
Queen City Hotel (Station), site			Allegany	AL-IV-A-120	NO		Park Street	Cumberland	CUMBERLAND	C30	AL-IV-A-120
Maple Arch			Allegany	AL-IV-A-122	NO	114	Park Street	Cumberland	CUMBERLAND	C30	AL-IV-A-122
Lena Street School			Allegany	AL-IV-A-123	NO	320-326	Furnace Street	Cumberland	CUMBERLAND	C30	AL-IV-A-123
Zihlman House			Allegany	AL-IV-A-124	NO	208	Piedmont Avenue	Cumberland	CUMBERLAND	C30	AL-IV-A-124
Dr. Thomas W. Koon House			Allegany	AL-IV-A-126	NO	221	Baltimore Avenue	Cumberland	CUMBERLAND	C30	AL-IV-A-126
Footer House			Allegany	AL-IV-A-129	NO	303	Decatur Street	Cumberland	CUMBERLAND	C30	AL-IV-A-129
Washington & Lee Apartments			Allegany	AL-IV-A-130	NO	10	South Lee Street	Cumberland	CUMBERLAND	C30	AL-IV-A-130
Congregation Ber Chayim	65	79001106	Allegany	AL-IV-A-132	NO				CUMBERLAND	C30	065 / AL-IV-A-132
Cumberland City Hall	66	73000882	Allegany	AL-IV-A-132	NO				CUMBERLAND	C30	066 / AL-IV-A-132
Downtown Cumberland Historic District			Allegany	AL-IV-A-132	YES			Cumberland	CUMBERLAND	C30	AL-IV-A-132
African Methodist Episcopal Church			Allegany	AL-IV-A-136	NO		Decatur Street	Cumberland	CUMBERLAND	C30	AL-IV-A-136
69 - George Truog House	69	86002382	Allegany	AL-IV-A-141	NO				CUMBERLAND	C30	069 / AL-IV-A-141
Two Houses	68		Allegany	AL-IV-A-141	NO				CUMBERLAND	C30	068 / AL-IV-A-141
Former Hotel	067A		Allegany	AL-IV-A-141	YES				CUMBERLAND	C30	067A / AL-IV-A-141
Brick Bldgs	068A		Allegany	AL-IV-A-141	NO				CUMBERLAND	C30	068A / AL-IV-A-141
Brick and Frame Bldg	068B		Allegany	AL-IV-A-141	NO				CUMBERLAND	C30	068B / AL-IV-A-141
Double House	069A		Allegany	AL-IV-A-141	NO				CUMBERLAND	C30	069A / AL-IV-A-141
York Hotel	069B		Allegany	AL-IV-A-141	YES				CUMBERLAND	C30	069B / AL-IV-A-141
Camden Hose Company	62	79003257	Allegany	AL-IV-A-142	NO				CUMBERLAND	C30	062 / AL-IV-A-142
Canada (Viaduct) (N. Mechanic Street) (Keller Surv			Allegany	AL-IV-A-142	NO		North Mechanic Street	Cumberland	CUMBERLAND	C30	AL-IV-A-142
Dumbhundred (Stony Battery, North End) (KellerSurv			Allegany	AL-IV-A-143	YES			Cumberland	CUMBERLAND	C30	AL-IV-A-143
Early Houses	63		Allegany	AL-IV-A-145	NO				CUMBERLAND	C30	063 / AL-IV-A-145
West Side (Keller Survey)			Allegany	AL-IV-A-145	NO			Cumberland	CUMBERLAND	C30	AL-IV-A-145
Kelly Springfield (The Kelly) (Keller Survey)			Allegany	AL-IV-A-146	NO			Cumberland	CUMBERLAND	C30	AL-IV-A-146
Bridge, US 40 Alt. over Franklin St. (SHA # A-C-02			Allegany	AL-IV-A-149	YES		Henderson Avenue (Alt40)	Cumberland	CUMBERLAND	C30	AL-IV-A-149
Market Street Bridge (SHA #AC0510)			Allegany	AL-IV-A-150	NO		Market Street	Cumberland	CUMBERLAND	C30	AL-IV-A-150
Cumberland YMCA	67	97001184	Allegany	AL-IV-A-151	NO				CUMBERLAND	C30	067 / AL-IV-A-151
Cumberland YMCA			Allegany	AL-IV-A-151	NO	205	Baltimore Avenue	Cumberland	CUMBERLAND	C30	AL-IV-A-151
Wills Creek Bridge (Proj. #AL725B21) RR over Wills			Allegany	AL-IV-A-152	NO		North Mechanic Street	Cumberland	CUMBERLAND	C30	AL-IV-A-152
Blue Bridge (SHA #1066), MD942 over North Branch			Allegany	AL-IV-A-153	NO		Johnson Street (MD 942)	Cumberland	CUMBERLAND	C30	AL-IV-A-153
Queen Anne-style House	59	AL-V-B-002	Allegany	AL-V-B-002	NO				CUMBERLAND	C30	059 / AL-V-B-002
Queen Anne Style House			Allegany	AL-V-B-002	NO	200	National Highway (US 40)	Narrows Park	CUMBERLAND	C30	AL-V-B-002
Fazenbaker-Taylor-Holzshu-Shearer House			Allegany	AL-V-B-003	NO	741	National Highway (US 40)	La Vale	CUMBERLAND	C30	AL-V-B-003
Mid 19th Century Brick House			Allegany	AL-V-B-004	NO	843	National Highway (US 40)	La Vale	CUMBERLAND	C30	AL-V-B-004
Five Mile House	54	76000976	Allegany	AL-V-B-005	YES	1025	National Highway (US 40)	La Vale	CUMBERLAND	C30	054 / AL-V-B-005
Five Mile House	54	76000976	Allegany	AL-V-B-005	YES	1025	National Highway (US 40)	La Vale	CUMBERLAND	C30	AL-V-B-005
Four Mile House	57	76000976	Allegany	AL-V-B-006	YES	520	National Highway (US 40)	La Vale	CUMBERLAND	C30	AL-V-B-006
James Clark Distilling Co. (Queen Glass Co. Buildi			Allegany	AL-V-B-007	NO	505	National Highway (US 40)	La Vale	CUMBERLAND	C30	AL-V-B-007
The Narrows			Allegany	AL-V-B-009	YES		National Highway (US 40)	Cumberland	CUMBERLAND	C30	AL-V-B-009
La Vale Toll Gate House			Allegany	AL-V-B-012	YES		National Highway (US 40)	La Vale	CUMBERLAND	C30	AL-V-B-012
Dressman Brick House			Allegany	AL-V-B-095	NO		Cash Valley Road	La Vale	CUMBERLAND	C30	AL-V-B-095
Long House			Allegany	AL-V-B-096	NO		Long Drive	La Vale	CUMBERLAND	C30	AL-V-B-096
Gover Mission Style House			Allegany	AL-V-B-098	NO	274	National Highway (US 40)	La Vale	CUMBERLAND	C30	AL-V-B-098
Spendelov Camp, site			Allegany	AL-V-B-099	YES		Vocke Road (MD 658)	Winchester	CUMBERLAND	C30	AL-V-B-099
National Road (The Cumberland Road)			Allegany	AL-V-B-100	YES		National Highway (US 40)	La Vale	CUMBERLAND	C30	AL-V-B-100
Lover's Leap			Allegany	AL-V-B-102	NO		National Highway (US 40)	Cumberland	CUMBERLAND	C30	AL-V-B-102
Cumberland Paper Company			Allegany	AL-V-B-105	NO		Locust Grove Road	Locust Grove	CUMBERLAND	C30	AL-V-B-105
McGill House			Allegany	AL-V-B-106	NO		Old Mt. Savage Road (MD 831)	Locust Grove	CUMBERLAND	C30	AL-V-B-106
Clauson House			Allegany	AL-V-B-107	NO		Old Mt. Savage Road (MD 831)	Locust Grove	CUMBERLAND	C30	AL-V-B-107
Greenpoint Farm Brick House			Allegany	AL-V-B-108	NO		Greenpoint Road	Locust Grove	CUMBERLAND	C30	AL-V-B-108
Macy Log House			Allegany	AL-V-B-114	NO		Macy Drive	Winchester	CUMBERLAND	C30	AL-V-B-114
Iron Bridge	60		Allegany	AL-V-B-131	NO		Mill Street	La Vale	CUMBERLAND	C30	AL-V-B-131
Western Maryland Railway Bridge #1679			Allegany	AL-V-B-151	NO		US40 & Mt. Savage Rd. (MD36)	Homewood	CUMBERLAND	C30	060 / AL-V-B-151
Eckhart Branch Railroad Bridge			Allegany	AL-V-B-152	NO		US40 & Mt. Savage Rd. (MD36)	Homewood	CUMBERLAND	C30	AL-V-B-152
Oaklawn Avenue Bridge			Allegany	AL-V-B-153	NO		Oaklawn Avenue	La Vale	CUMBERLAND	C30	AL-V-B-153
Bridge, (SHA # 1028)			Allegany	AL-V-B-316	YES		National Pike (US 40)	Cumberland	CUMBERLAND	C30	AL-V-B-316

Narrows Marker	61		Allegany		YES				CUMBERLAND	C30	61
Four Mile House	57	76000976	Allegany		YES				CUMBERLAND	C30	57
Motel	56		Allegany		YES				CUMBERLAND	C30	56
LaVale Toll House	51	71000363	Allegany		YES				CUMBERLAND	C30	51
Slumberland Motel	52		Allegany		YES				CUMBERLAND	C30	52
Bungalows	70		Allegany		NO				CUMBERLAND	C30	70
Stone Commercial Bldg	58		Allegany		NO				CUMBERLAND	C30	58
National Road Marker	55		Allegany		YES				CUMBERLAND	C30	55
Tourist Cabins, Rte 49	53		Allegany		YES				CUMBERLAND	C30	53
Clarysville Inn (Inns on the National Road)			Allegany	AL-V-A-008	YES		Old National Pike (Alt. 40)	Clarysville	FROSTBURG	C31	AL-V-A-008
Clarysville Stone Arch Bridge			Allegany	AL-V-A-013	YES		Old National Pike (Alt. 40)	Clarysville	FROSTBURG	C31	AL-V-A-013
Clarysville Bridge	50		Allegany	AL-V-A-013, AL-V-A-283	YES				FROSTBURG	C31	050 / AL-V-A-013, AL-V-A-283
Eckhart (United) Methodist Church			Allegany	AL-V-A-016	NO		Porter Road & Main Street	Eckhart Mines	FROSTBURG	C31	AL-V-A-016
Pape Log House (Old Log House)			Allegany	AL-V-A-017	NO		Old National Pike (Alt. 40)	Eckhart Mines	FROSTBURG	C31	AL-V-A-017
Consolidation Company Stone House (Old Stone House)			Allegany	AL-V-A-018	NO		Cromwell Road	Eckhart Mines	FROSTBURG	C31	AL-V-A-018
Big Vein No. 4 Eckhart Mine (Consolidation Coal Co)			Allegany	AL-V-A-020	NO		Porter Road	Eckhart Mines	FROSTBURG	C31	AL-V-A-020
Michael's Log House (Old Log House)			Allegany	AL-V-A-023	NO		Old National Pike (Alt. 40)	Eckhart Mines	FROSTBURG	C31	AL-V-A-023
Brophy Mine Water Pump Shaft & Sta(New Shaft VentF			Allegany	AL-V-A-024	NO		New Shaft Road	Borden Shaft	FROSTBURG	C31	AL-V-A-024
Loar Log House (Old Log House)			Allegany	AL-V-A-025	NO		Hoffman Hollow Road	Hoffman	FROSTBURG	C31	AL-V-A-025
Old Eckhart School House (Haller Residence)			Allegany	AL-V-A-027	NO		Parkersburg Road (MD 638)	Eckhart Mines	FROSTBURG	C31	AL-V-A-027
Duckworth Residence (Coal Company House)			Allegany	AL-V-A-029	NO		Porter Road	Eckhart Mines	FROSTBURG	C31	AL-V-A-029
Martin's Plantation			Allegany	AL-V-A-030	YES		Maplehurst Road	Eckhart Mines	FROSTBURG	C31	AL-V-A-030
Old Ebenezer (The Old Ebenezer Church)			Allegany	AL-V-A-038	NO		Watkins Alley	Eckhart Mines	FROSTBURG	C31	AL-V-A-038
Dishong Farm House			Allegany	AL-V-A-050	NO		Blan Avon Road	Midlothian	FROSTBURG	C31	AL-V-A-050
Hoffman Drainage Tunnel			Allegany	AL-V-A-053	NO		Summit Road	Clarysville	FROSTBURG	C31	AL-V-A-053
Cordial Board & Batten House			Allegany	AL-V-A-057	NO		Washington Hollow Road	Eckhart Mines	FROSTBURG	C31	AL-V-A-057
Consolidation Coal Company House			Allegany	AL-V-A-137	NO		Piney Mountain Road	Eckhart Mines	FROSTBURG	C31	AL-V-A-137
Pape Saltbox			Allegany	AL-V-A-138	NO		Washington Hollow Road	Eckhart Mines	FROSTBURG	C31	AL-V-A-138
Hoffman Hollow Schoolhouse			Allegany	AL-V-A-140	NO		Hoffman Hollow Road	Hoffman	FROSTBURG	C31	AL-V-A-140
			Allegany	AL-V-A-141	NO		Hoffman Hollow Road	Hoffman	FROSTBURG	C31	AL-V-A-141
Brode Log House			Allegany	AL-V-A-142	NO		Vale Summit Road (MD 36)	Hoffman	FROSTBURG	C31	AL-V-A-142
Stone House			Allegany	AL-V-A-148	NO		Hoffman Hollow Road	Hoffman	FROSTBURG	C31	AL-V-A-148
Frame House			Allegany	AL-V-A-217	NO		Shaft Mountain Road	Midlothian	FROSTBURG	C31	AL-V-A-217
Condry Frame House			Allegany	AL-V-A-218	NO		Piney Mountain Road	Eckhart Mines	FROSTBURG	C31	AL-V-A-218
Porter Frame House			Allegany	AL-V-A-247	NO		Hillside Terrace	Eckhart Mines	FROSTBURG	C31	AL-V-A-247
			Allegany	AL-V-A-248	NO		Old National Pike (Alt. 40)	Clarysville	FROSTBURG	C31	AL-V-A-248
Brick, Frame, Bungalow Houses	48		Allegany	AL-V-A-249	NO				FROSTBURG	C31	048 / AL-V-A-249
Eckhart Mines	47		Allegany	AL-V-A-249	NO				FROSTBURG	C31	047 / AL-V-A-249
Stone Houses	46		Allegany	AL-V-A-249	NO				FROSTBURG	C31	046 / AL-V-A-249
Old Alignment	49		Allegany	AL-V-A-249	YES				FROSTBURG	C31	049 / AL-V-A-249
Eckhart Mines Survey District			Allegany	AL-V-A-249	NO			Eckhart	FROSTBURG	C31	AL-V-A-249
Clarysville Survey District			Allegany	AL-V-A-283	NO			Clarysville	FROSTBURG	C31	AL-V-A-283
Hoffman Hollow Survey District			Allegany	AL-V-A-285	NO			Hoffman	FROSTBURG	C31	AL-V-A-285
Midlothian Survey District			Allegany	AL-V-A-287	NO			Midlothian	FROSTBURG	C31	AL-V-A-287
Beall High School			Allegany	AL-VII-A-007	NO		Beall High School Road	Frostburg	FROSTBURG	C31	AL-VII-A-007
Old Evans' House (Hen House Restaurant)			Allegany	AL-VII-A-021	NO	65	Bowery Street	Frostburg	FROSTBURG	C31	AL-VII-A-021
Frostburg Historic District			Allegany	AL-VII-A-043	YES			Frostburg	FROSTBURG	C31	AL-VII-A-043
Old Alignment	50A		Allegany		YES				FROSTBURG	C31	50A
Old Alignment	50B		Allegany		YES				CUMBERLAND	C31	50B
Toll Gate Posts	39	AL-V-A-001	Allegany	AL-V-A-001	YES		National Pike (US 40)	Frostburg	FROSTBURG	C32	039 / AL-V-A-001
Toll Gate Posts (Two)	39		Allegany	AL-V-A-001	YES		National Pike (US 40)	Frostburg	FROSTBURG	C32	AL-V-A-001
Consolidation Coal Company Mine No. 9 (Manway & Fa			Allegany	AL-V-A-254	NO		New Hope Road	Frostburg	FROSTBURG	C32	AL-V-A-254
Salem United Church of Christ			Allegany	AL-VII-A-024	NO	77	Broadway	Frostburg	FROSTBURG	C32	AL-VII-A-024
Jewish Synagogue (Church of God)			Allegany	AL-VII-A-027	NO	16	Stoyer Street	Frostburg	FROSTBURG	C32	AL-VII-A-027
Dickerson African Methodist Episcopal Church			Allegany	AL-VII-A-031	NO	148	West Mechanic Street	Frostburg	FROSTBURG	C32	AL-VII-A-031
Percy Cemetery			Allegany	AL-VII-A-033	NO		1st Street & Lemmerts Alley	Frostburg	FROSTBURG	C32	AL-VII-A-033
Hitchins Brick House (Workman Brick House)			Allegany	AL-VII-A-037	NO	179	West Main Street (US 40)	Frostburg	FROSTBURG	C32	AL-VII-A-037
Frostburg RR Station	45		Allegany	AL-VII-A-043	YES				FROSTBURG	C32	045 / AL-VII-A-043
Nelson Beall House	41		Allegany	AL-VII-A-043	NO				FROSTBURG	C32	041 / AL-VII-A-043
Devecmon House	40		Allegany	AL-VII-A-043	NO				FROSTBURG	C32	040 / AL-VII-A-043
Prichard, Durst, Betz Bldgs	42		Allegany	AL-VII-A-043	NO				FROSTBURG	C32	042 / AL-VII-A-043
Race Hotel	43		Allegany	AL-VII-A-043	YES				FROSTBURG	C32	043 / AL-VII-A-043
Hocking House	44	82001579	Allegany	AL-VII-A-043	NO				FROSTBURG	C32	044 / AL-VII-A-043
Charles Layman Farm			Garrett	G-I-A-174	NO		National Pike (US 40)	Frostburg	AVILTON	C32	G-I-A-174
James A. Carey Farm II			Garrett	G-I-A-175	NO		National Pike (US 40)	Frostburg	AVILTON	C32	G-I-A-175
Flossie Johnson Bungalow (Race Farm Tenant House "			Garrett	G-I-B-001	NO		National Pike (US 40)	Frostburg	FROSTBURG	C32	G-I-B-001
Gov. Johnson House	35		Garrett	G-I-B-002	NO				FROSTBURG	C32	035 / G-I-B-002
Johnson House(Race Farm Tenant Hse "B" & Outbuildi			Garrett	G-I-B-002	NO		National Pike (US 40)	Frostburg	FROSTBURG	C32	G-I-B-002

Lammert Farm House			Garrett	G-I-B-006	NO		National Pike (US 40)	Piney Grove	FROSTBURG	C32	G-I-B-006
Little Savage Mountain House			Garrett	G-I-B-030	YES		National Pike (US 40) & MD 546	Frostburg	FROSTBURG	C32	G-I-B-030
Stone Arch Bridge #11008			Garrett	G-I-B-034	YES		Old National Pike (Old 40)	Frostburg	FROSTBURG	C32	G-I-B-034
George Meese Farm			Garrett	G-I-B-102	NO		National Pike (US 40)	Frostburg	FROSTBURG	C32	G-I-B-102
James Carey Farm			Garrett	G-I-B-113	NO		National Pike (US 40)	Frostburg	FROSTBURG	C32	G-I-B-113
Braddock's Savage River Camp	37		Garrett		YES				FROSTBURG	C32	37
The Long Stretch	30		Garrett		YES				AVILTON	C32	30
Former Motels/Gas Stations	31		Garrett		YES				AVILTON	C32	31
The Hen House	32		Garrett		YES				AVILTON	C32	32
Happy Hills Restaurant	33		Garrett		YES				FROSTBURG	C32	33
Braddock's 3rd Camp	34		Garrett		YES				FROSTBURG	C32	34
St. John's Rock	38		Garrett		NO				FROSTBURG	C32	38
Old Alignment	36A		Garrett		YES				FROSTBURG	C32	36A
Mt. Zion United Methodist Church			Garrett	G-I-A-003	NO		National Pike (US 40)	Piney Grove	AVILTON	C33	G-I-A-003
Blocker-Klotz Farm Tenant House			Garrett	G-I-A-004	NO		National Pike (US 40)	Piney Grove	AVILTON	C33	G-I-A-004
Bepier House (John Blocker House)			Garrett	G-I-A-005	NO		National Pike (US 40)	Piney Grove	AVILTON	C33	G-I-A-005
Tomlinson Inn	27		Garrett	G-I-A-012	YES		National Pike (US 40)	High Point	AVILTON	C33	027 / G-I-A-012
Tomlinson Inn and the Little Meadows (Stone House)	27		Garrett	G-I-A-012	YES		National Pike (US 40)	High Point	AVILTON	C33	G-I-A-012
John R. Hershberger House			Garrett	G-I-A-059	NO		National Pike (US 40)	High Point	AVILTON	C33	G-I-A-059
Halfway House (James O. Meese House)			Garrett	G-I-A-135	YES		National Pike (US 40)	Frostburg	AVILTON	C33	G-I-A-135
Paul McKenzie Farm			Garrett	G-I-A-159	NO		Green Lantern Road	Frostburg	AVILTON	C33	G-I-A-159
Hetz Farm			Garrett	G-I-A-162	NO		Green Lantern Road	Avilton	AVILTON	C33	G-I-A-162
Michael Farm			Garrett	G-I-A-173	NO		National Pike (US 40)	Frostburg	AVILTON	C33	G-I-A-173
Little Meadows Stone Arch Bridge (SHA #11009X0)			Garrett	G-I-A-198	YES		National Pike (US 40)	High Point	AVILTON	C33	G-I-A-198
Little Meadow's Motel	26		Garrett		YES				AVILTON	C33	26
Braddock's Road	28		Garrett		YES				AVILTON	C33	28
Shades of Death	29		Garrett		YES				AVILTON	C33	29
Little Meadows	028A		Garrett		YES				AVILTON	C33	028A
Old Alignment	28B		Garrett		YES				AVILTON	C33	28B
Sherman House House			Garrett	G-I-A-120	NO		National Pike (US 40)	High Point	AVILTON	C34	G-I-A-120
Eli D. Kinsinger Farm			Garrett	G-I-A-122	NO		National Pike (US 40)	High Point	AVILTON	C34	G-I-A-122
Fenton H. Platter House			Garrett	G-I-A-141	NO		Foster's Inn Road	High Point	AVILTON	C34	G-I-A-141
Broadwater-Frost House			Garrett	G-II-C-004	NO		Main Street (US 40)	Grantsville	GRANTSVILLE	C34	G-II-C-004
Casselman Hotel	20	76000976	Garrett	G-II-C-005	YES		Main Street & Dorsey Hotel Road	Grantsville	GRANTSVILLE	C34	020 / G-II-C-005
The Casselman(CasselmanHotel, Dorsey'sHotel, Drivers	20	76000976	Garrett	G-II-C-005	YES		Main Street & Dorsey Hotel Road	Grantsville	GRANTSVILLE	C34	G-II-C-005
Edwards House			Garrett	G-II-C-006	NO		Main Street & Pennsylvania Avenue	Grantsville	GRANTSVILLE	C34	G-II-C-006
Herring House			Garrett	G-II-C-007	NO		Main Street (US 40)	Grantsville	GRANTSVILLE	C34	G-II-C-007
National Hotel			Garrett	G-II-C-008	YES		MainStreet(US 40) & Jennings Road(MD 495)	Grantsville	GRANTSVILLE	C34	G-II-C-008
Ruth Enlow Library (First State Bank, Grantsville)			Garrett	G-II-C-009	NO		Main Street (US 40) & Bank Street	Grantsville	GRANTSVILLE	C34	G-II-C-009
Penn Alps, Main Building			Garrett	G-II-C-011	YES		Old National Pike (Old 40)	Grantsville	GRANTSVILLE	C34	G-II-C-011
Elliott-Stanton House			Garrett	G-II-C-012	NO		Old National Pike (Old 40)	Grantsville	GRANTSVILLE	C34	G-II-C-012
Stanton's Mill			Garrett	G-II-C-013	YES		Old National Pike (Old 40)	Grantsville	GRANTSVILLE	C34	G-II-C-013
Old Casselman River Bridge (Casselman Bridge St.Pa	22	66000391	Garrett	G-II-C-014	YES		Old National Pike (Old 40)	Grantsville	GRANTSVILLE	C34	G-II-C-014
Fuller-Baker Log House			Garrett	G-II-C-015	YES		National Pike (US 40)	Grantsville	GRANTSVILLE	C34	G-II-C-015
National Road Stone Arch Bridge, Stanton's Mill			Garrett	G-II-C-016	YES		Old National Pike (Old 40)	Grantsville	GRANTSVILLE	C34	G-II-C-016
Penn Alps Log Houses			Garrett	G-II-C-017	NO		Old National Pike (Old 40)	Grantsville	GRANTSVILLE	C34	G-II-C-017
New Casselman River Bridge			Garrett	G-II-C-101	YES		National Pike (US 40)	Grantsville	GRANTSVILLE	C34	G-II-C-101
Aaron Beachy Farm			Garrett	G-II-C-139	NO		National Pike (US 40)	Grantsville	GRANTSVILLE	C34	G-II-C-139
Wissemann-Hetrick Farm			Garrett	G-II-C-293	NO		National Pike (US 40)	Hi-Point	GRANTSVILLE	C34	G-II-C-293
Country Cassel			Garrett	G-II-C-324	NO		Bittinger Road (MD 495)	Grantsville	GRANTSVILLE	C34	G-II-C-324
Gilead Broadwater Farm			Garrett	G-II-C-325	NO		Bittinger Road (MD 495)	Grantsville	GRANTSVILLE	C34	G-II-C-325
			Garrett	G-II-C-347	NO		Old National Pike (Old 40)	Grantsville	GRANTSVILLE	C34	G-II-C-347
			Garrett	G-II-C-348	NO		National Pike (US 40)	Grantsville	GRANTSVILLE	C34	G-II-C-348
			Garrett	G-II-C-350	NO		New Germany Road	Grantsville	GRANTSVILLE	C34	G-II-C-350
Old Inn	15		Garrett	G-II-C-359	NO				GRANTSVILLE	C34	015 / G-II-C-359
Livengood House	16		Garrett	G-II-C-359	NO				GRANTSVILLE	C34	016 / G-II-C-359
First State Bank	18		Garrett	G-II-C-359	NO				GRANTSVILLE	C34	018 / G-II-C-359
Early Home	17		Garrett	G-II-C-359	NO				GRANTSVILLE	C34	017 / G-II-C-359
Commercial Bldg	017A		Garrett	G-II-C-359	NO				GRANTSVILLE	C34	017A / G-II-C-359
Frame Building	017B		Garrett	G-II-C-359	NO				GRANTSVILLE	C34	017B / G-II-C-359
Victoria Hotel (?)	19	76000976	Garrett	G-II-C-359	YES				GRANTSVILLE	C34	019 / G-II-C-359
White House	019A		Garrett	G-II-C-359	NO				GRANTSVILLE	C34	019A / G-II-C-359
Grantsville Survey District			Garrett	G-II-C-359	YES			Grantsville	GRANTSVILLE	C34	G-II-C-359
Casselman River Bridge	22	66000391	Garrett		YES				GRANTSVILLE	C34	22
Fuller-Baker Log House	14	71000375	Garrett		NO				GRANTSVILLE	C34	14
Former Gas Station	9		Garrett		YES				GRANTSVILLE	C34	9
Stone Bridge	8		Garrett		YES				GRANTSVILLE	C34	8

Braddock's 5th Camp	12		Garrett		YES				GRANTSVILLE	C34	12
Stanton's Mill	23	83002949	Garrett		NO				GRANTSVILLE	C34	23
Negro Mtn Summit Park	7		Garrett		YES				GRANTSVILLE	C34	7
Hillside Inn	10		Garrett		YES				GRANTSVILLE	C34	10
Big Shade Run Bridge	13		Garrett		YES				GRANTSVILLE	C34	13
Hilltop Inn	25		Garrett		YES				AVILTON	C34	25
Diefenbach House	24		Garrett		NO				AVILTON	C34	24
Old Alignment	11		Garrett		YES				GRANTSVILLE	C34	11
Old Alignment	21		Garrett		YES				GRANTSVILLE	C34	21
State Line UMC	2		Garrett	G-II-B-003	NO				ACCIDENT	C35	002 / G-II-B-003
State Line United Methodist Church			Garrett	G-II-B-003	NO		US 40 & Pig's Ear Road	Strawn	ACCIDENT	C35	G-II-B-003
Adam Oester Farm			Garrett	G-II-B-032	NO		National Pike (US 40)	Strawn	ACCIDENT	C35	G-II-B-032
Ruth C. Fitzpatrick House			Garrett	G-II-B-039	NO		National Pike (US 40)	Strawn	ACCIDENT	C35	G-II-B-039
Goodfellow Tenant House			Garrett	G-II-B-051	NO		National Pike (US 40)	Strawn	ACCIDENT	C35	G-II-B-051
Oakton Hotel			Garrett	G-II-B-055	YES		National Pike (US 40)	Strawn	ACCIDENT	C35	G-II-B-055
S.M. Moser House			Garrett	G-II-B-057	NO		National Pike (US 40)	Strawn	ACCIDENT	C35	G-II-B-057
Sipes Farm			Garrett	G-II-B-186	NO		Pig's Ear Road	Strawn	ACCIDENT	C35	G-II-B-186
Mason-Dixon Line: Milestone No. (206)			Garrett	G-II-B-251	NO		National Pike (US 40)	Strawn	ACCIDENT	C35	G-II-B-251
Mason-Dixon Line	1		Garrett	G-II-B-252	NO				ACCIDENT	C35	001 / G-II-B-252
Mason-Dixon Line: Milestone No. (207)			Garrett	G-II-B-252	NO		National Pike (US 40)	Strawn	ACCIDENT	C35	G-II-B-252
Mason-Dixon Line: Milestone No. (208)			Garrett	G-II-B-253	NO		National Pike (US 40)	Strawn	ACCIDENT	C35	G-II-B-253
Smearman-Duckworth Store			Garrett	G-II-C-227	NO		National Pike (US 40)	Keyser's Ridge	GRANTSVILLE	C35	G-II-C-227
Irvin Platter Farmstead			Garrett	G-II-C-274	NO		Amish Road	Jennings	GRANTSVILLE	C35	G-II-C-274
MacNess Beachy Farm			Garrett	G-II-C-288	NO		National Pike (US 40)	Keyser's Ridge	GRANTSVILLE	C35	G-II-C-288
Peter Royer Farm			Garrett	G-II-C-289	NO		National Pike (US 40)	Keyser's Ridge	GRANTSVILLE	C35	G-II-C-289
Arthur Green Farm			Garrett	G-II-C-290	NO		National Pike (US 40)	Keyser's Ridge	GRANTSVILLE	C35	G-II-C-290
Beachy-Reichenbecher Farm			Garrett	G-II-C-292	NO		Keyser's Ridge Oakland Road (US 219S)	Keyser's Ridge	GRANTSVILLE	C35	G-II-C-292
Puzzly Run Bridge	6		Garrett	G-II-C-360, 18GA169	YES		National Pike (US 40)	Keyser's Ridge	GRANTSVILLE	C35	006 / G-II-C-360
Puzzly Run Bridge	6		Garrett	G-II-C-360, 18GA169	YES		National Pike (US 40)	Keyser's Ridge	GRANTSVILLE	C35	G-II-C-360
Bear Camp Marker	3		Garrett		YES				ACCIDENT	C35	3
19th C. Farm	4		Garrett		NO				GRANTSVILLE	C35	4
Late 19th C. Farm	5		Garrett		NO				GRANTSVILLE	C35	5
Milemarkers	002A		Garrett		YES				ACCIDENT	C35	002A
Grantsville Feed	005A		Garrett		NO				GRANTSVILLE	C35	005A
Barn and Outbuilding	005B		Garrett		NO				GRANTSVILLE	C35	005B
Old Alignment	6A		Garrett		YES				GRANTSVILLE	C35	6A
Old Alignment	2B		Garrett		YES				ACCIDENT	C35	2B
Grace Trinity United Church of Christ			Frederick	F-5-004	NO		Old National Pike (MD144)	Frederick	WALKERSVILLE	C9	F-5-004
Chesapeake & Ohio Canal National Historical Park			Washington	WA-VI-048	YES				HF/KEE/SHEP/WIL/HED/B	OUT Canal	WA-VI-048
MHT -- ARCHAEOLOGICAL SITES -- NOT MAPPED											
Old Morgantown Road Site			Garrett	18GA197							
19th C. Tavern			Garrett	18GA240						ACCIDENT	
Gen. Braddock Camp			Garrett	18GA69						GRANTSVILLE	
Stone Breaker Factory Mill			Washington	18WA325						GRANTSVILLE	
Shafer Mill			Washington	18WA306						HAGERSTOWN	
Boester Mill			Washington	18WA301						FUNKSTOWN	
Benevola Mill			Washington	18WA309						FUNKSTOWN	
Brewery			Frederick	18FR573							
19th C. Church			Frederick	18FR574						FREDERICK	
Birely Tannery			Frederick	18FR575						FREDERICK	
Royd Smith House			Frederick	18FR576						FREDERICK	
mid-19th House			Howard	18HO265						FREDERICK	
late 19th C. grist mill and wagon works			Howard	18HO131						WOODBINE	
The Lodge			Baltimore	18BA292						ELLCOTT CITY	
Gwynns Falls Mills			Baltimore City	18BC35						ELLCOTT CITY	